

Company Presentation

November 2014



**African
Petroleum**
CORP LTD



Disclaimer



This Presentation has been prepared by African Petroleum Corporation Limited (Company).

Summary information

This Presentation contains summary information about the Company and its subsidiaries (Company Group) and their activities. The information in this Presentation does not purport to be complete or comprehensive, and does not purport to summarise all information that an investor should consider when making an investment decision. It should be read in conjunction with the Company's other periodic and continuous disclosure announcements lodged with Oslo Axess and NSX, which are available at www.oslobors.no and www.nsx.com.au

Not financial product advice

This Presentation is for information purposes only and is not a prospectus, product disclosure statement or other offer document under Australian law or the law of any other jurisdiction. This Presentation is not financial advice, a recommendation to acquire Company shares or accounting, legal or tax advice. It has been prepared without taking into account the objectives, financial or tax situation or needs of individuals. Before making an investment decision, prospective investors should consider the appropriateness of the information having regard to their own objectives, financial and tax situation and needs and seek such legal, financial and/or taxation advice as they deem necessary or appropriate to their jurisdiction. The Company is not licensed to provide financial product advice in respect of Company shares.

Future performance

This Presentation contains certain forward looking statements. The words anticipated, expected, projections, forecast, estimates, could, may, target, consider and will and other similar expressions are intended to identify forward looking statements. Forward looking statements, opinions and estimates provided in this Presentation are based on assumptions and contingencies which are subject to change without notice, as are statements about market and industry trends, which are based on interpretations of current market conditions. Forward looking statements including projections, indications or guidance on future earnings or financial position and estimates are provided as a general guide only and should not be relied on as an indication or guarantee of future performance. There can be no assurance that actual outcomes will not differ materially from these statements. This difference may be due to various factors, including, among others: general business, economic, competitive, political and social uncertainties; the actual results of current exploration activities; actual results of reclamation activities; the outcome of negotiations, conclusions of economic evaluations and studies; changes in project parameters and returns as plans continue to be refined; future price of oil and gas; drilling risks; political instability; insurrection or war; arbitrary changes in law; delays in obtaining governmental approvals or financing or in the completion of development activities. The forward looking statements in this Presentation speak only as of the date of this Presentation. To the full extent permitted by law, the Company and its directors, officers, employees, advisers, agents and intermediaries disclaim any obligation or undertaking to release any updates or revisions to the information to reflect any

change in expectations or assumptions. Nothing in this Presentation will under any circumstances create an implication that there has been no change in the affairs of Company Group since the date of this Presentation.

Investment risk

An investment in the Company shares is subject to investment and other known and unknown risks, some of which are beyond the control of the Company Group. The Company does not guarantee the performance of the Company or any particular rate of return on the performance on the Company Group, nor does it guarantee the repayment of capital from the Company or any particular tax treatment.

Not an offer

This Presentation is not and should not be considered an offer or an invitation to acquire Company shares or any other financial products and does not and will not form any part of any contract for the acquisition of the Company shares. This Presentation does not constitute an offer to sell, or the solicitation of an offer to buy, any securities in the United States. Company shares have not been, and will not be, registered under the US Securities Act of 1933 and may not be offered or sold in the United States exempt in a transaction exempt from, or not subject to, the registration requirements of the US Securities Act and applicable US state securities laws.

Competent person statements

The information in this Presentation relating to hydrocarbon resource estimates includes information compiled by Dr Adam Law, Geoscience Director of ERC Equipoise Ltd. Dr Law, is a post-graduate in Geology, a Fellow of the Geological Society and a member of the Society of Petroleum Evaluation Engineers. He has 18 years relevant experience in the evaluation of oil and gas fields and exploration acreage, preparation of development plans and assessment of reserves and resources. Dr Law has consented to the inclusion in this Presentation of the matters based on the information in the form and context in which it appears.

Disclaimer

Company's advisers have not authorised, permitted or caused the issue, lodgement, submission, despatch or provision of this Presentation and do not make or purport to make any statement in this Presentation and there is no statement in this Presentation which is based on any statement by the advisers. To the maximum extent permitted by law, the Company, its representatives, advisers and their respective officers, directors, employees, agents or controlling persons (collectively, the Representatives) expressly disclaim all liabilities in respect of, and make no representation or warranty, express or implied, as to the accuracy or completeness of the information contained in this Presentation or in any other documents furnished by the foregoing persons.

Statements made in this Presentation are made only at the date of this Presentation. The information in this Presentation remains subject to change without notice.

All estimated net unrisks mean prospective resources quoted in this presentation have been taken from ERC Equipoise Competent Person's Report 2014

Corporate Snapshot

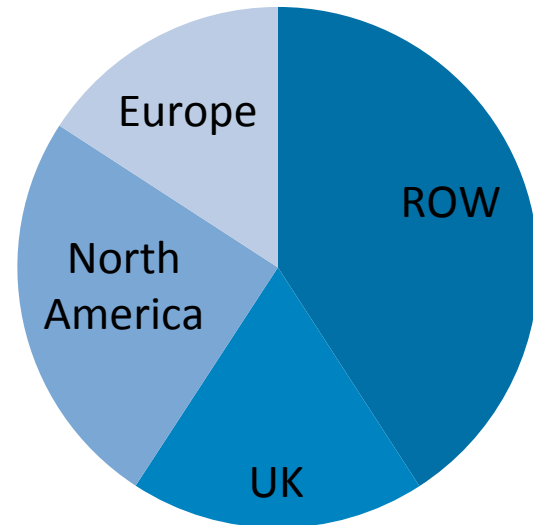


- > Significant acreage holder in West African Transform Margin (4 countries, 8 licences)
- > 5.2bn+ barrels unrisked oil resources*
- > 81-100% working interest and operator
- > Strong relationships with host Governments
- > Seeking partners to share risk and reward and to participate in future growth
- > Positive third party results in adjacent acreage
- > Proven deep-water operator

Market Statistics (28.10.14)

Listing	OAX (APCL) NSX (AOQ)
No. of Shares on Issue	685,857,456
Market Cap	NOK 439m
Share Price	NOK 0.64
Broker Sentiment	Buy
Average Broker Target	NOK 4.98

Geographic Analysis of Investors



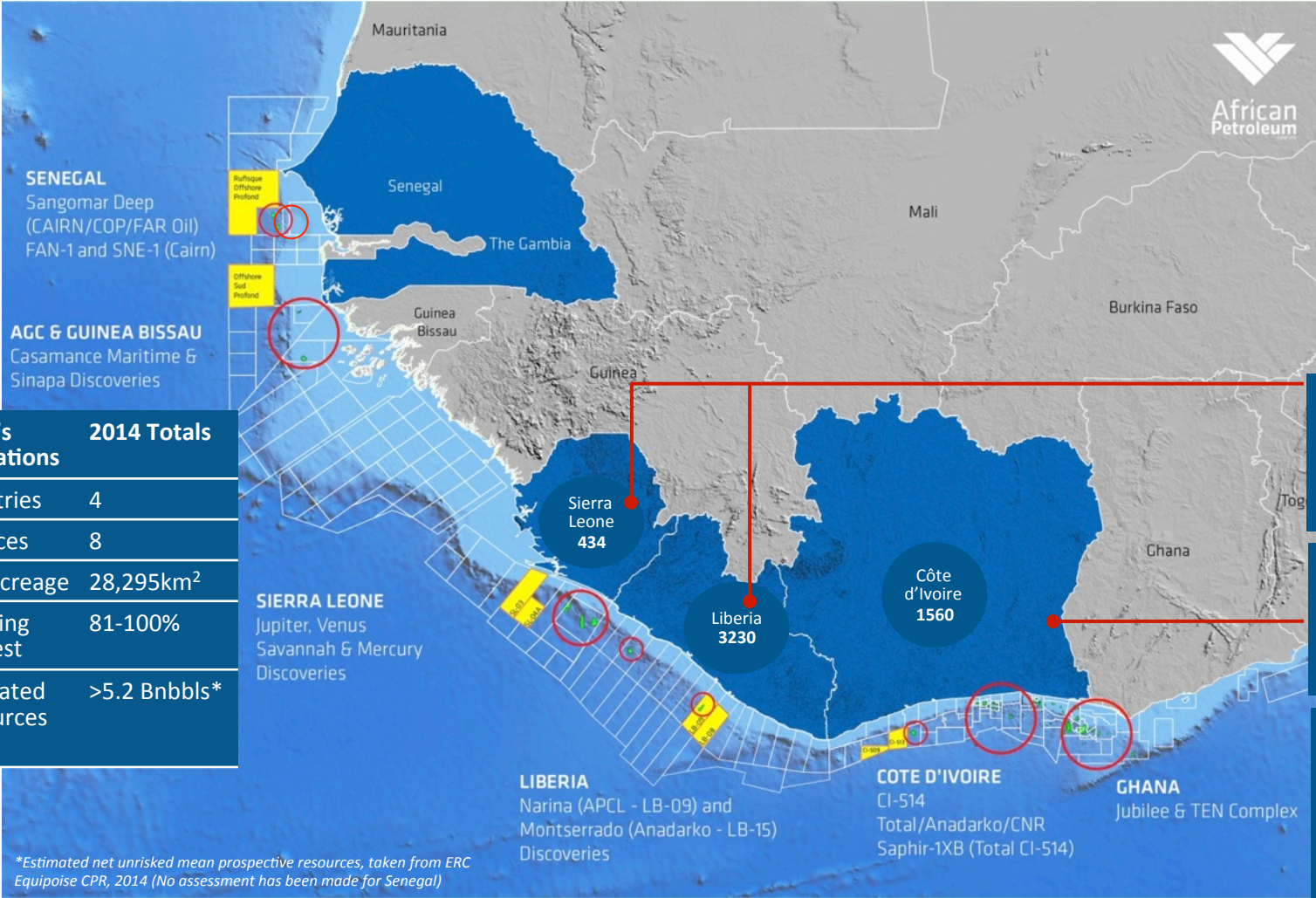
Blue Chip Shareholder Base



Taken from the largest 20 shareholders

* Resource volumes taken from ERC Equipoise, CPR 2014

High Success Rate in our West African Focus Area



APCL's Operations	2014 Totals
Countries	4
Licences	8
Net Acreage	28,295km ²
Working interest	81-100%
Estimated Resources	>5.2 Bnbbls*

*Estimated net unrisks mean prospective resources, taken from ERC Equipose CPR, 2014 (No assessment has been made for Senegal)

2010 - 2014

30 Discoveries

2014 - 2016

63 Wells Planned

Historic

12 Wells drilled

73% Exploration Success

9 Wells drilled

67% Exploration Success

Ghana

29 Wells drilled

72% Exploration Success

63% commercial success (18 wells)

● Net unrisks mean estimate of prospective oil resources (MMstb) ○ Existing Discoveries

Net Acreage Position in Deep-Water

Relative to other Listed Operators in West Africa

Operators

Liberia - Ratified 2008

Operated offshore acreage in km²

No. 1



Sierra Leone – Ratified 2011

Operated offshore acreage in km²

No. 1



Senegal – Ratified 2011

Operated offshore acreage in km²

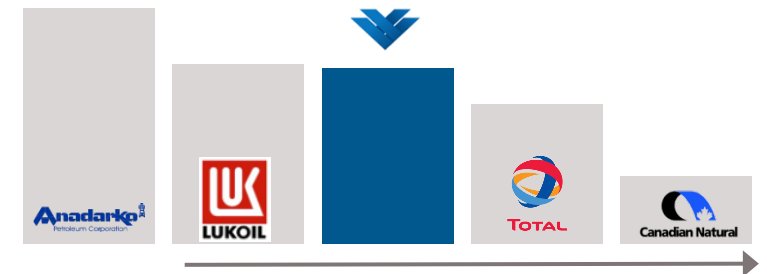
No. 1



Côte d'Ivoire – Ratified 2012

Operated offshore acreage in km²

No. 3



Notes: Only including listed companies
Data taken from Wood Mackenzie Feb 2014

Strategic Plan – The Way Forward



Current 2014

Objective: Consolidate Position

- > New Management & Governance ✓
- > Proven low cost deep-water operator with reviewed strategy and plan ✓
- > Private Placement ✓
- > Licence extensions Liberia, Sierra Leone, Côte d'Ivoire ✓
- > Move onto European exchange ✓
- > Listing in Oslo, raise capital ✓
- > Leverage learnings from third party activity to build predictive model pre drill ✓
- > Bring in new partners ✓
- > Acquire more 3D seismic data ✓
- > Execute high impact exploration programme

Future 2015-2016

Objective: Develop Our High-Potential Assets

- > Leverage technology to de-risk ahead of the drill bit
- > Drill key exploration wells with partners
- > Build off exploration success with early appraisal
- > Continue to work social programmes and local content in host countries
- > Build new acreage positions with others
- > Seek and execute commercial options

Long Term 2017-2018

Objective: Assuming Success, Commercialise & Expand

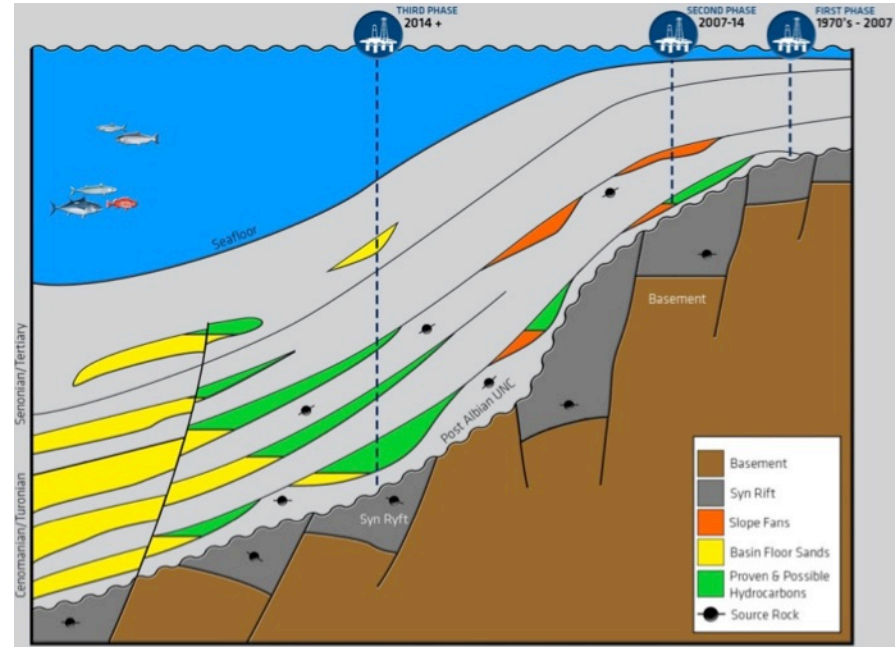
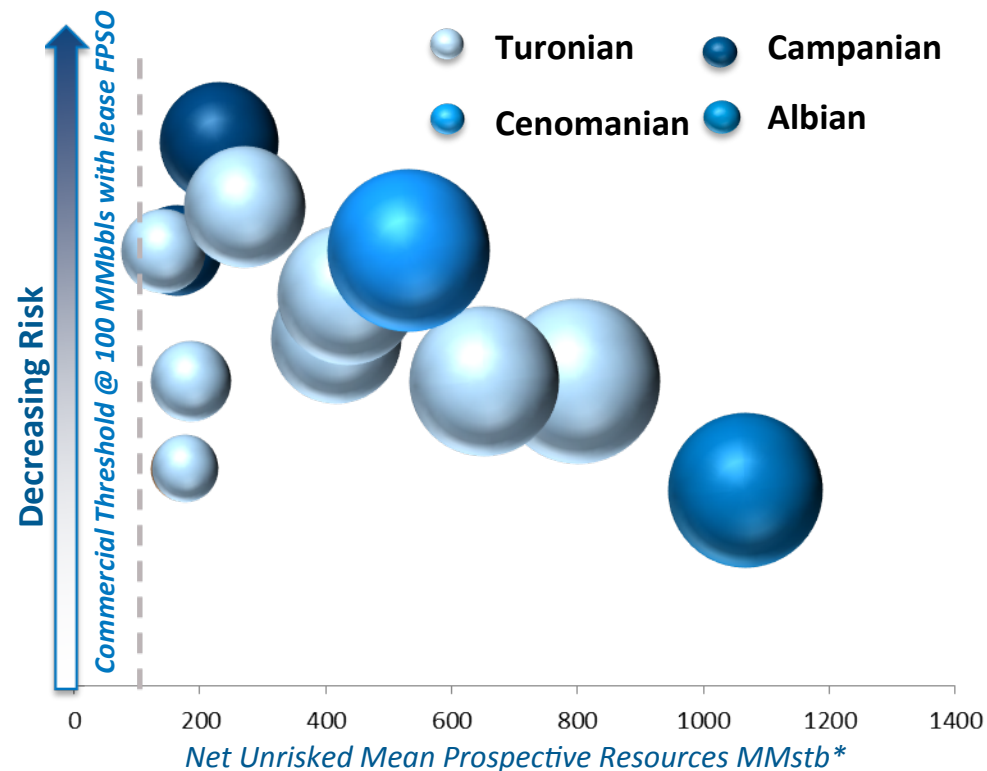
- > Seek to move discoveries to commerciality – assuming success in exploration
- > Acquire new acreage; focus on geology and good terms, not geography
- > Expand portfolio options over broader asset base
- > Create sustainable commerciality and stakeholder value with a continued “liquids focus”

✓ - already completed

Build Sustained Shareholder Value

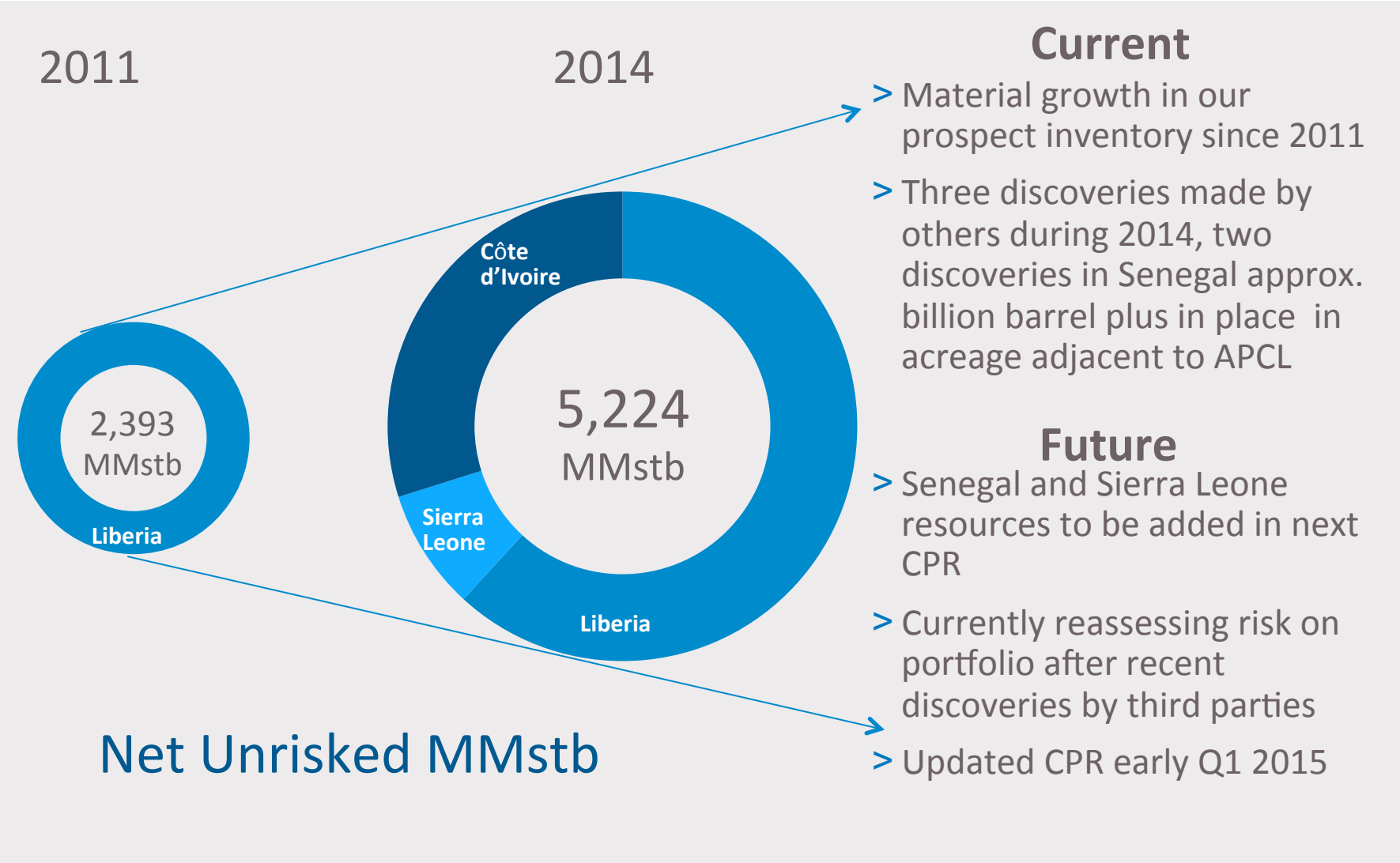
West African Transform Margin - Portfolio & Plays

- > Our CPR Inventory has a range of technical maturity but is diverse and material
- > Our large equity position provides room for partners in the transformation



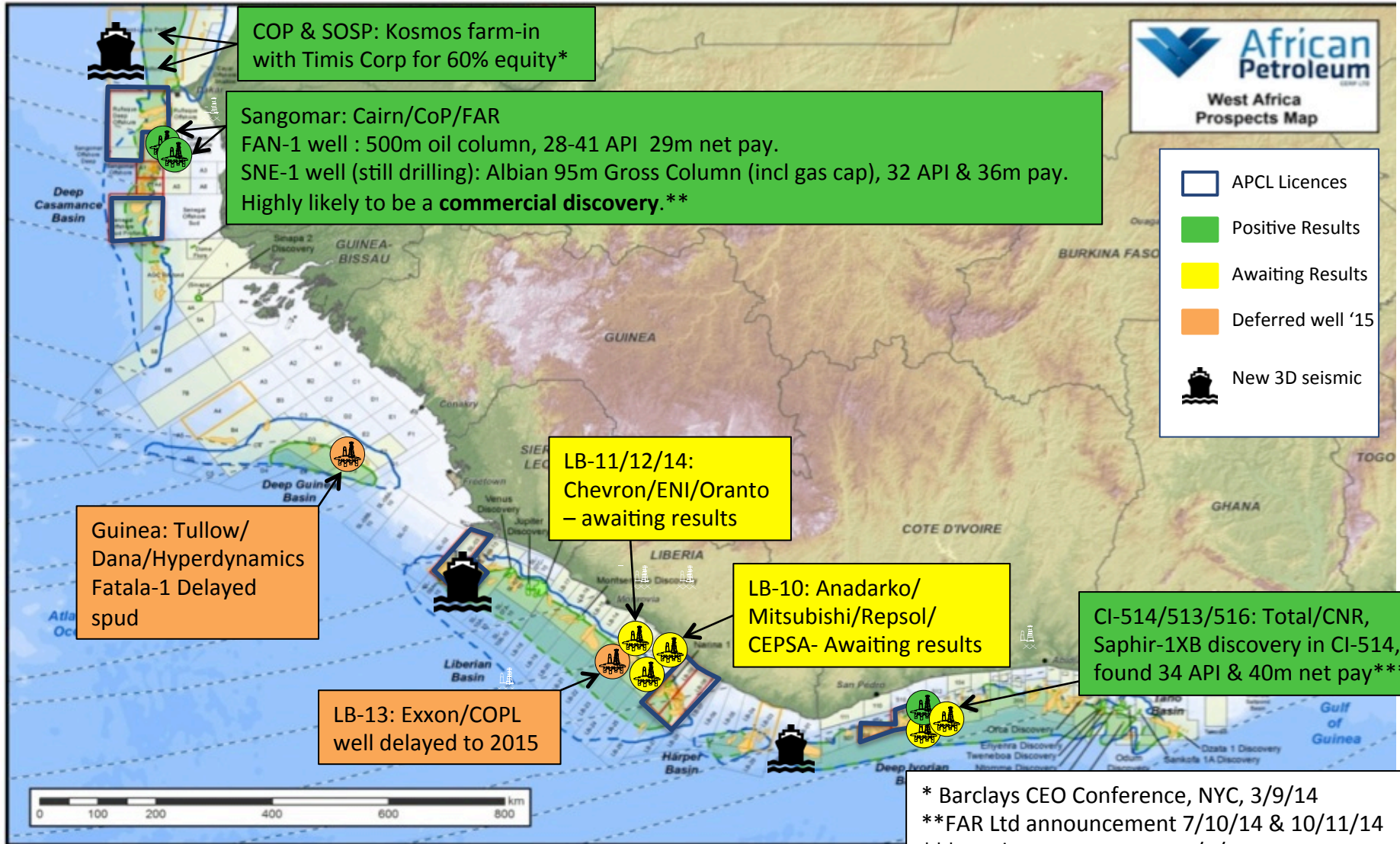
- > Pure play deep-water exploration
- > 2014: New wave of Exploration targeting deeper water, results potentially transformational to risk assessment
- > “Basin floor sands” in the Upper Cretaceous offers upside

* Resource volumes from 2014 CPR – Independently assessed by ERC Equipoise. Bubble size proportional to net risked mean prospective resources

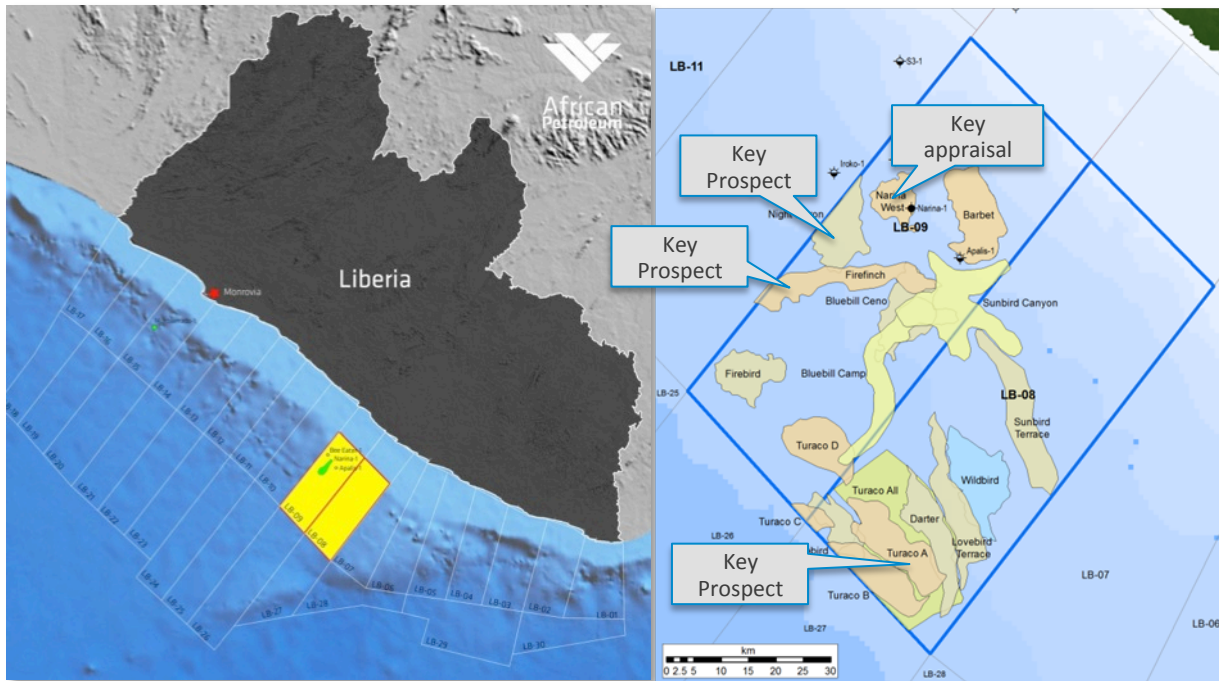


Resource volumes taken from ERC Equipoise, CPR 2014

2014 Third Party Catalyst Activity



Liberia – LB-08 and LB-09



- > Attractive early mover fiscal terms
- > 4 discoveries in the Liberia – Sierra Leone basin by others
- > Narina-1 oil discovery in LB-09
- > New Firefinch prospect – similar to Hess’ down-dip Pecan discovery in Ghana
- > Offset drilling activity in LB-10 and LB-12 in 2014

Licence	APCL WI	Date of Grant	Original Licence Period	Current Status	Remaining 2 nd Exploration Period Commitments
LB-08	100%	June 2008	4 + 2* + 2	2 nd exploration period*	Acquire higher resolution seismic images
LB-09	100%	June 2008	4 + 2* + 2	2 nd exploration period*	Acquire higher resolution seismic images

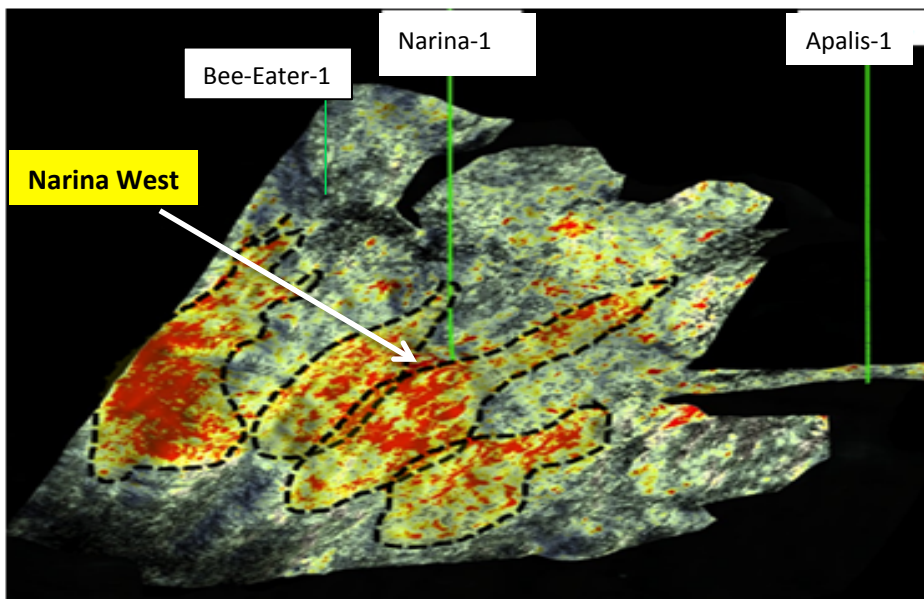
* Second exploration period extended by 2 years for both blocks, extension to 16/6/2016

Liberia – LB-09: Narina West Appraisal

- > Narina-1 found 31 metres net pay Turonian and underlying Albian reservoirs (38°-40° API)
- > Lateral limit defined by stratigraphic pinch-out
- > Down-dip limit defined by projected OWC from pressure data (predicted at 3,840m)
- > Amplitudes help define target sweet-spots

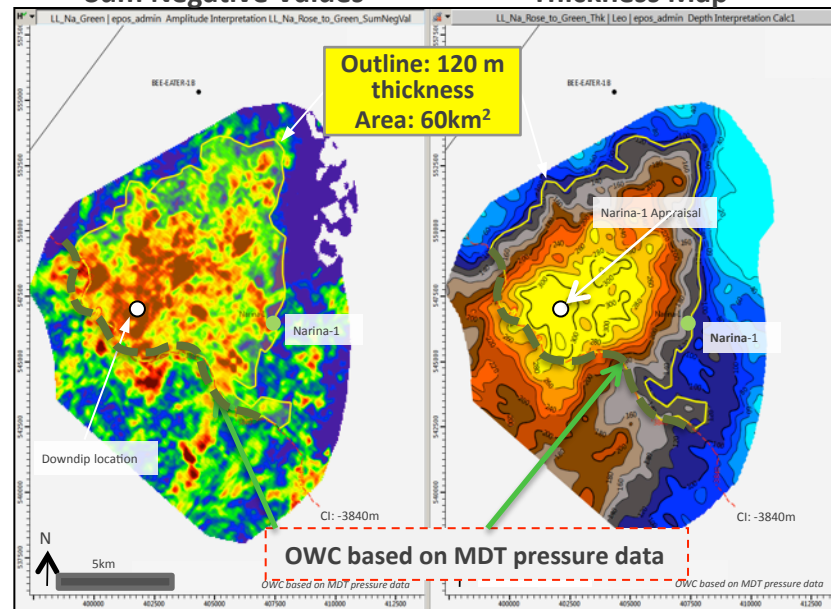
Prospect	Narina West
Block	LB-09
Licence Area	2,634km²
Water Depth	900-1200m
Play Fairway	Turonian
Mean Prospective Unrisked Resources	184 MMstb*

Narina Area Fan Systems



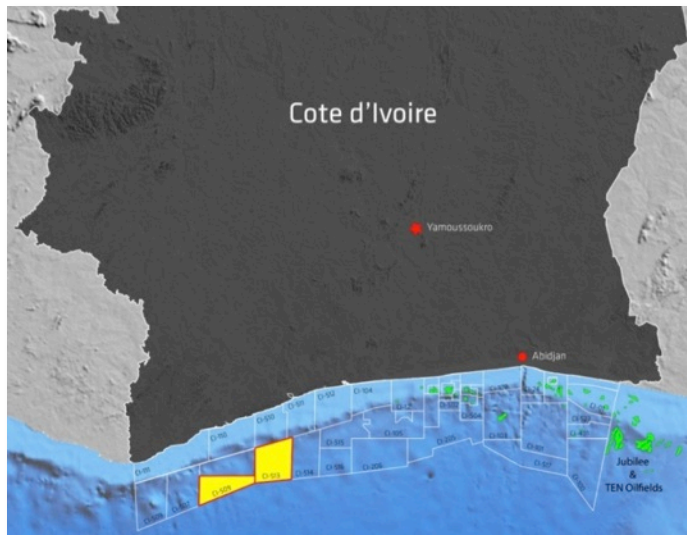
3D amplitude map on top Turonian

Narina Slope Fan Sum Negative Values



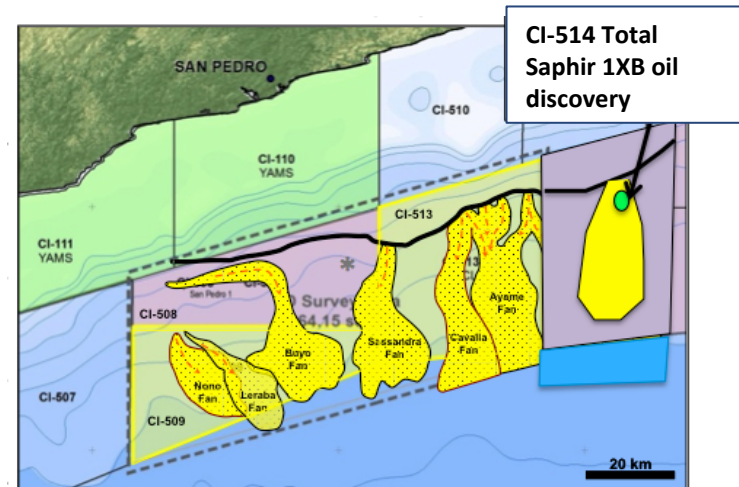
*ERC Epoque CPR 2014

Côte d'Ivoire – CI-509 and CI-513



- > High quality proprietary 3D seismic. New PSDM delivered in March 2014
- > April 2014 – Total oil discovery at Saphir-1XB, Block CI-514, 40m net oil pay 34° API
- > Developed a deeper & expanded inventory post April 2014 CPR with multiple Commercial size prospects
- > Buried Hill farm-in to CI-509 for 2 for 1 promote announced July 2014

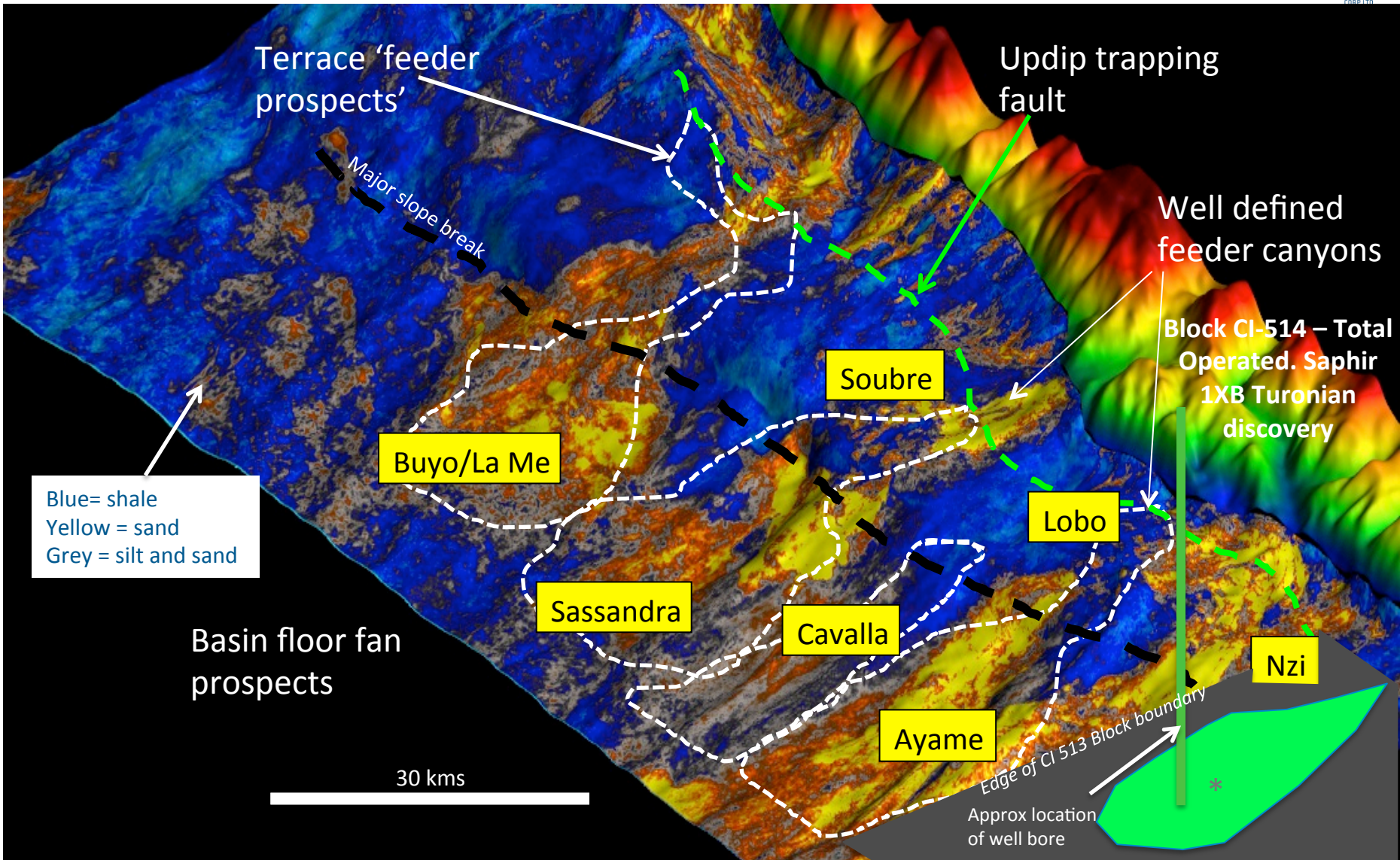
Licence	APCL WI	Date of Grant	Licence Period	Current Status	Remaining 1 st Exploration Period Work Commitments
CI-513	90%	Dec. 2011	4+1.5+1.5	1 st Expl. Period	3D Seismic complete, One well to follow
CI-509	90%	March 2012	4+2+2	1 st Expl. Period	3D Seismic complete, One well to follow



*Image postdates ERC Equipoise CPR 2014, CI 514 interpretation based on 2D seismic data

Côte d'Ivoire - Turonian Basin Floor Fans

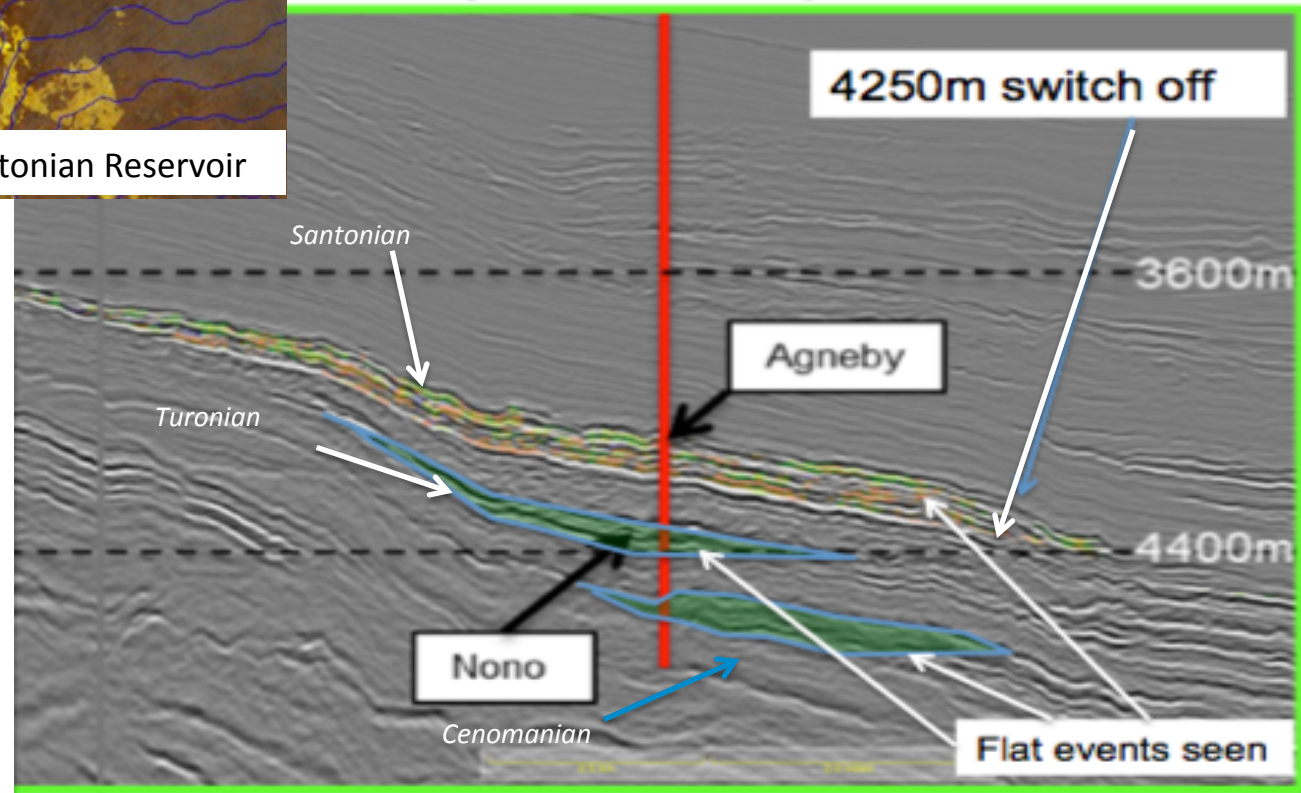
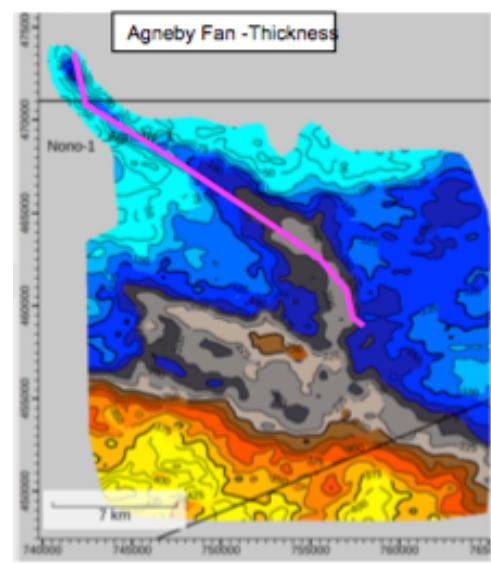
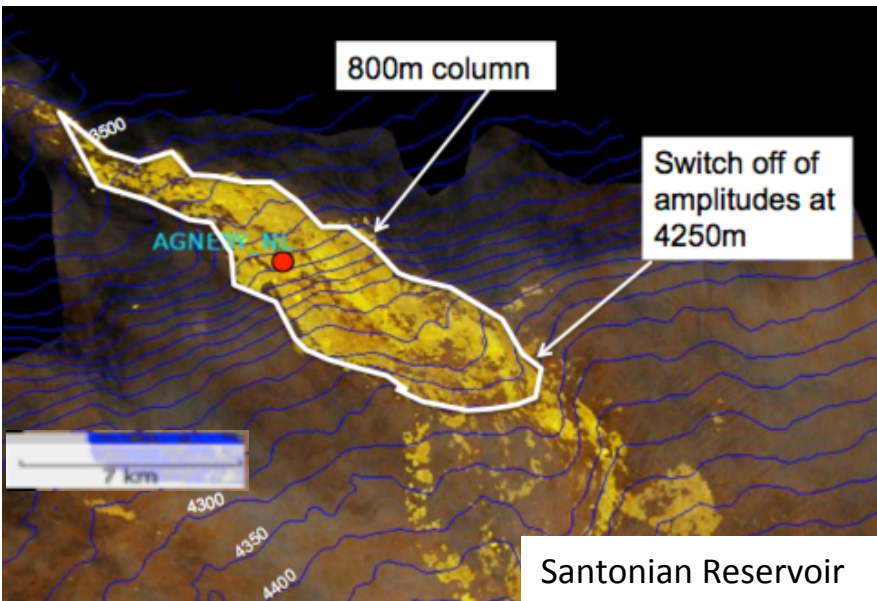
(at one of three mapped Turonian levels – looking from SE to NW at the Top Turonian)



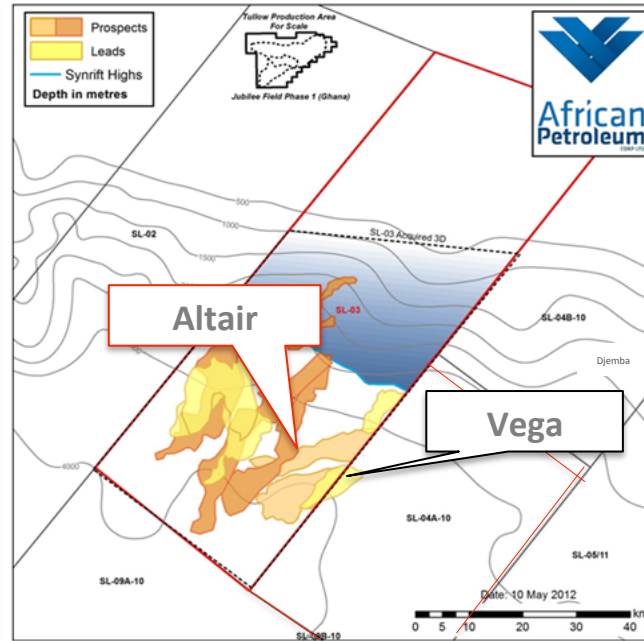
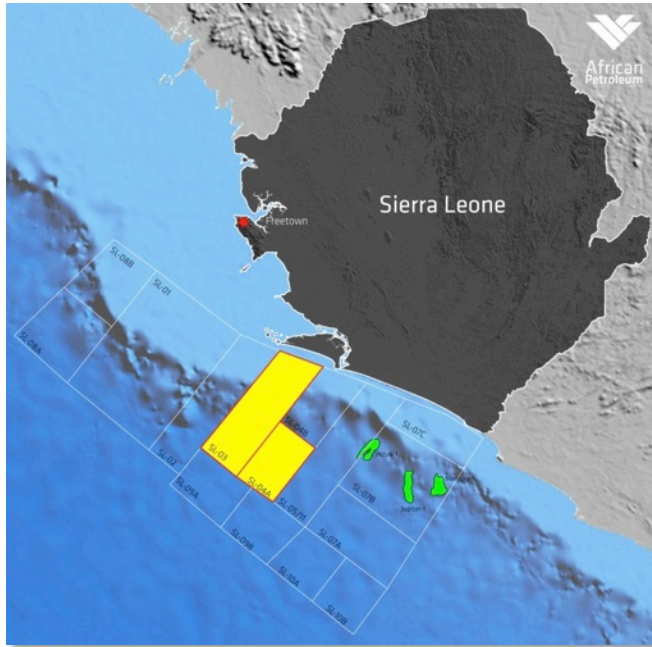
* Total CI 514 schematic depiction of subsurface based on a schematic model from 2D seismic

Côte d'Ivoire – CI-509 Agnéby

Prospect	Agnéby
Block	CI-509
License Area	1,091km ²
Water Depth	2645m
Play Fairway	Santonian/Turonian and Cenomanian
Mean Prospective Net Unrisked Resources	*414 MMstb (Turonian only)



Sierra Leone – SL-03 and SL-4A-10

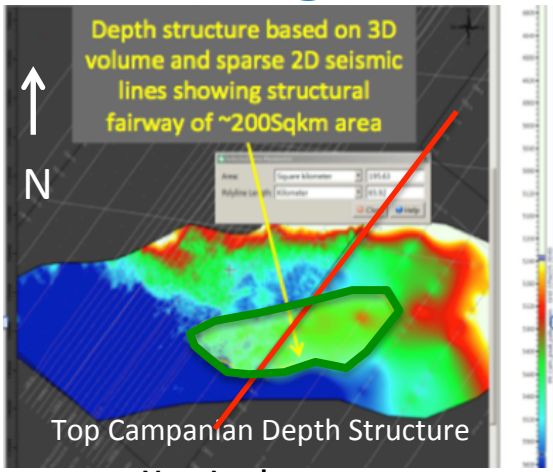
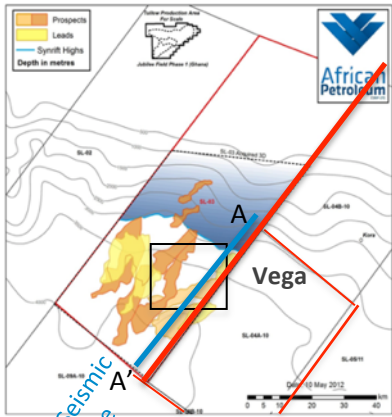


- > Block SL-03 covered by 3D seismic, SL-4A-10 3D seismic now being acquired
- > Prospective at multiple levels within the Cretaceous
- > On trend with oil discoveries
- > 3 discoveries by Anadarko/Tullow/Repsol partnership
- > Amplitude support for stacked hydrocarbon pays at multiple Upper Cretaceous levels in dip closures

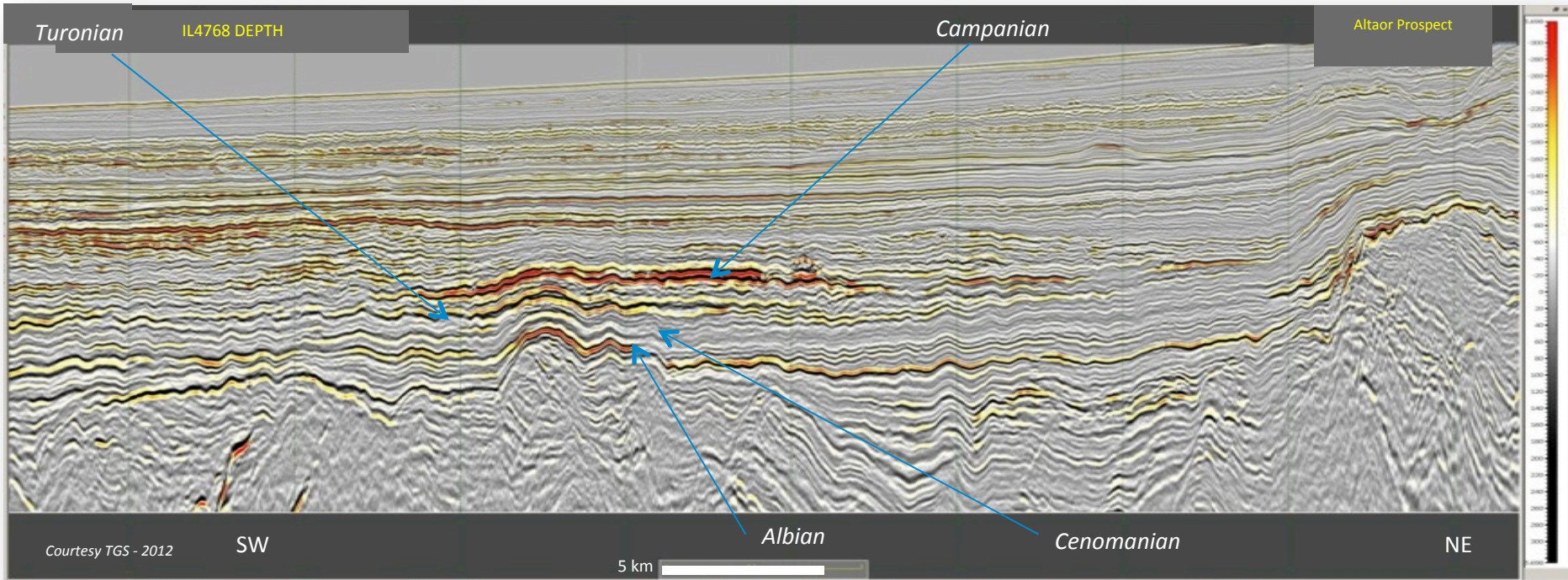
Licence	APCL WI	Date of Grant	Licence Period	Current Status	Remaining 1 st Exploration Commitments
SL-03	100%	April 2010	3*+2+2	Initial exploration period Extension granted to 23/4/2015	Completed Seismic Further geoscience work
SL-4A-10	100%	July 2012	3 +2+2	1 st exploration period	Contingent well/Acquire 1,500 km ² Seismic

*Licence extension granted

Sierra Leone – SL-03/04: Vega Lead

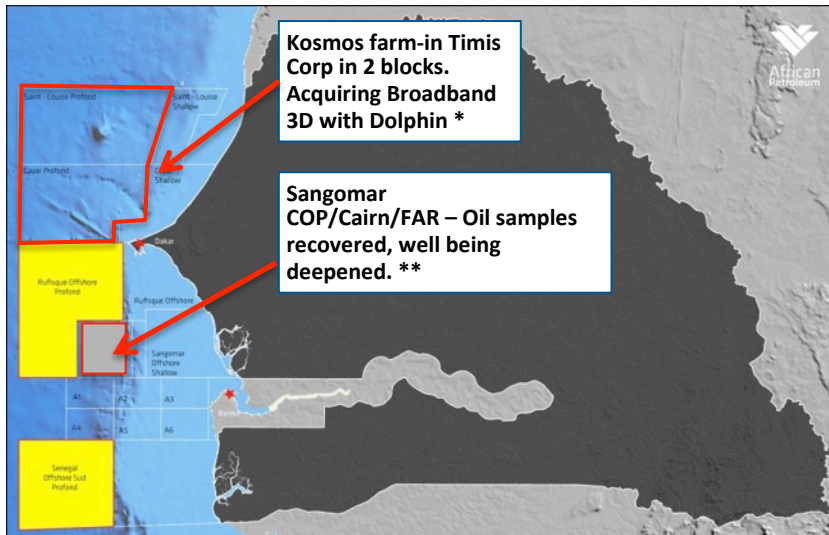


Lead	Vega
Block	SL-03 & SL-4A-10
License Area	5,855 km ²
Water Depth	3,500-3,800m
Play Fairway	Campanian/Turonian/ Cenomanian/Albian



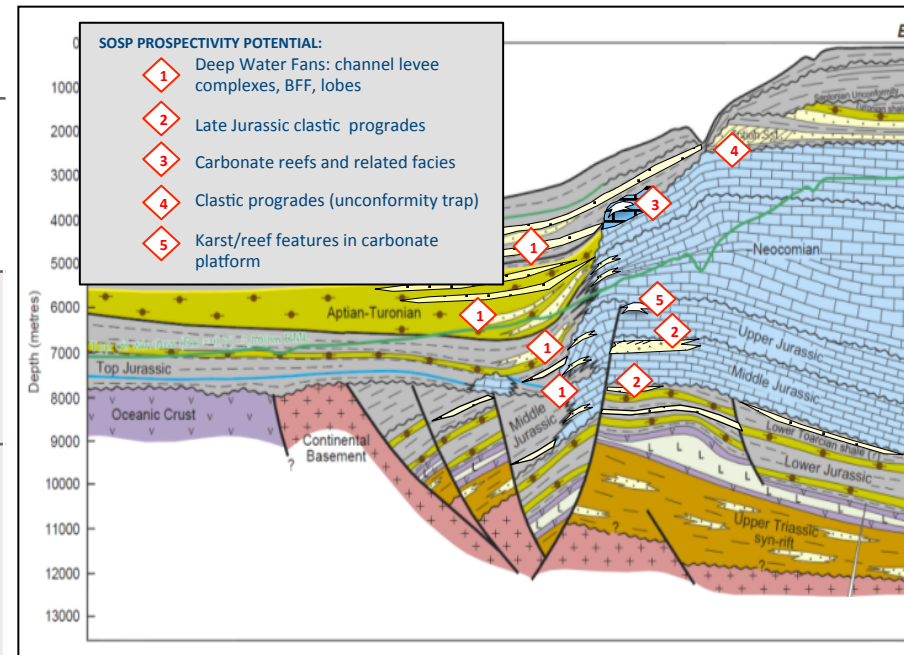
Courtesy TGS - 2012

Senegal – ROP and SOSP



- > High potential frontier exploration area
- > Industry drilling activity on trend in 2014 (Mauritania, Senegal, AGC)
- > Multiple plays -Cretaceous deep-water fan systems and platform margin carbonates
- > Extensive 3D seismic coverage acquired over SOSP

Licence	APCL WI	Date of Grant	Licence Period	Current Status	Remaining 1 st Exploration Period Work Commitments
ROP	81%	October 2011	4+2+2	1 st Exploration Period	Seismic obligations met, 1 well outstanding
SOSP	81%	October 2011	3+3+2.5	1 st Exploration Period	3D Seismic complete, Seismic Processing underway



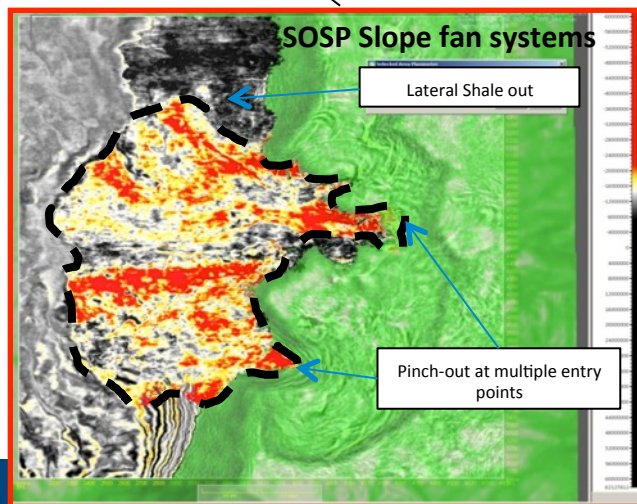
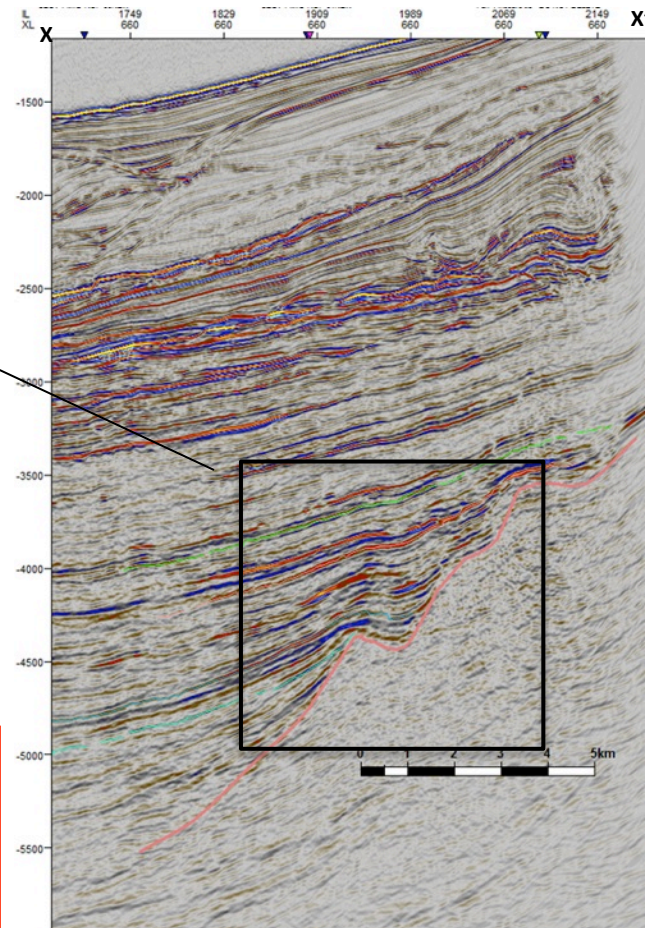
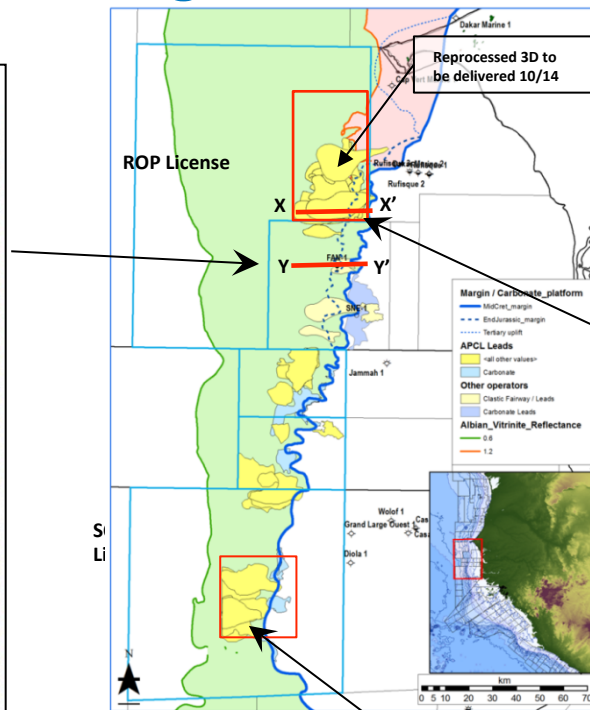
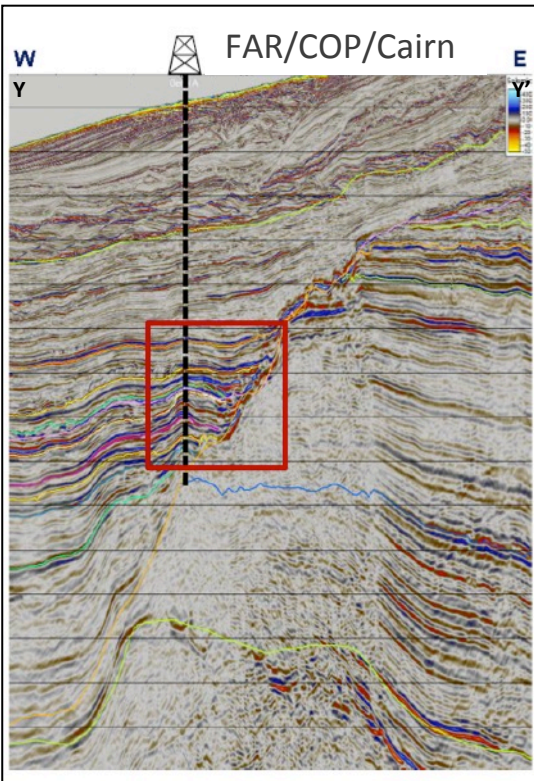
*No ERC Equipose work yet awaiting new 3D on ROP, delivered end Sept 2014

* Barclays CEO Conference in New York 3rd Sept 2014

** Offshore Energy Today 27th August 2014

Cairn/FAR/CoP discovery is analogous to African Petroleum's Senegal acreage *

FAN-1



FAR Ltd announcement (10/11/14) states that the likelihood of SNE-1 as a commercial discovery is very high

- Proven hydrocarbon system with multiple source rocks oil-mature
- Deepwater system feeding in from the SE corner of ROP license
- Apparent amplitude support to be evaluated on reprocessed 3D

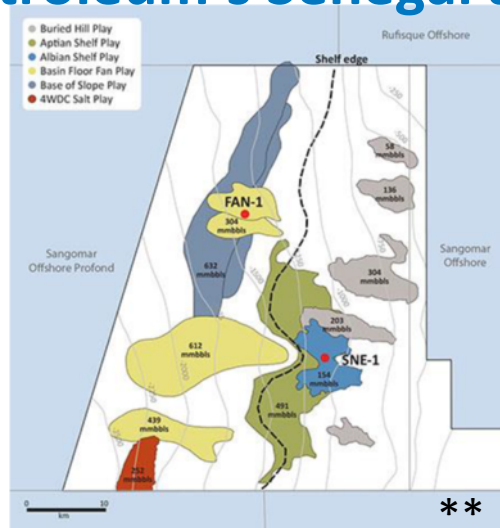
Second Cairn/FAR/CoP discovery at SNE-1 also analogous to African Petroleum's Senegal acreage *



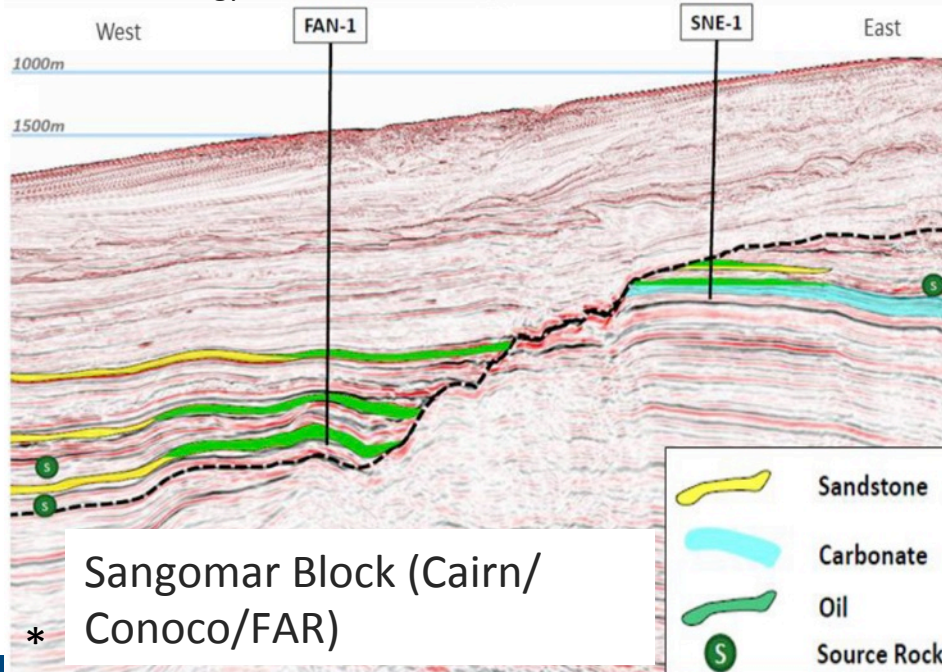
* Conoco Investor Presentation BoA Conference 13 Nov 2014

** FAR Investor Presentation - Resource Rising Star Conference 30th Sept 2014

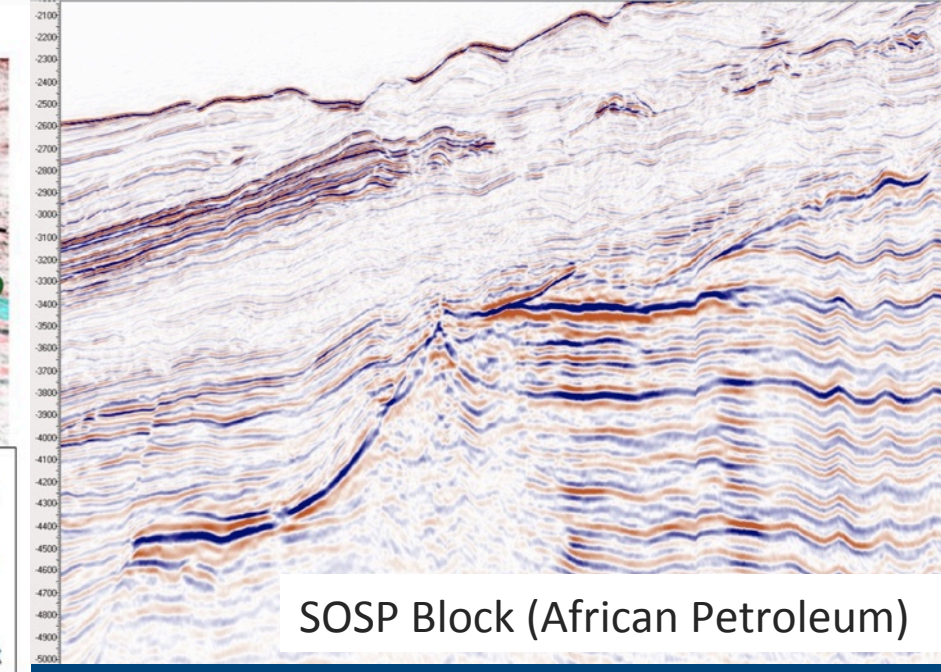
*** Cairn Energy News release 10th Nov 2014



- *** Initial SNE-1 well indicates:
- 95m gross oil bearing column with a gas cap
 - Excellent net oil pay of 36m
 - Oil of 32 degrees API
 - Preliminary P50, 330 mmbbls – reported **commercial discovery!**
 - Well drilling deeper carbonates



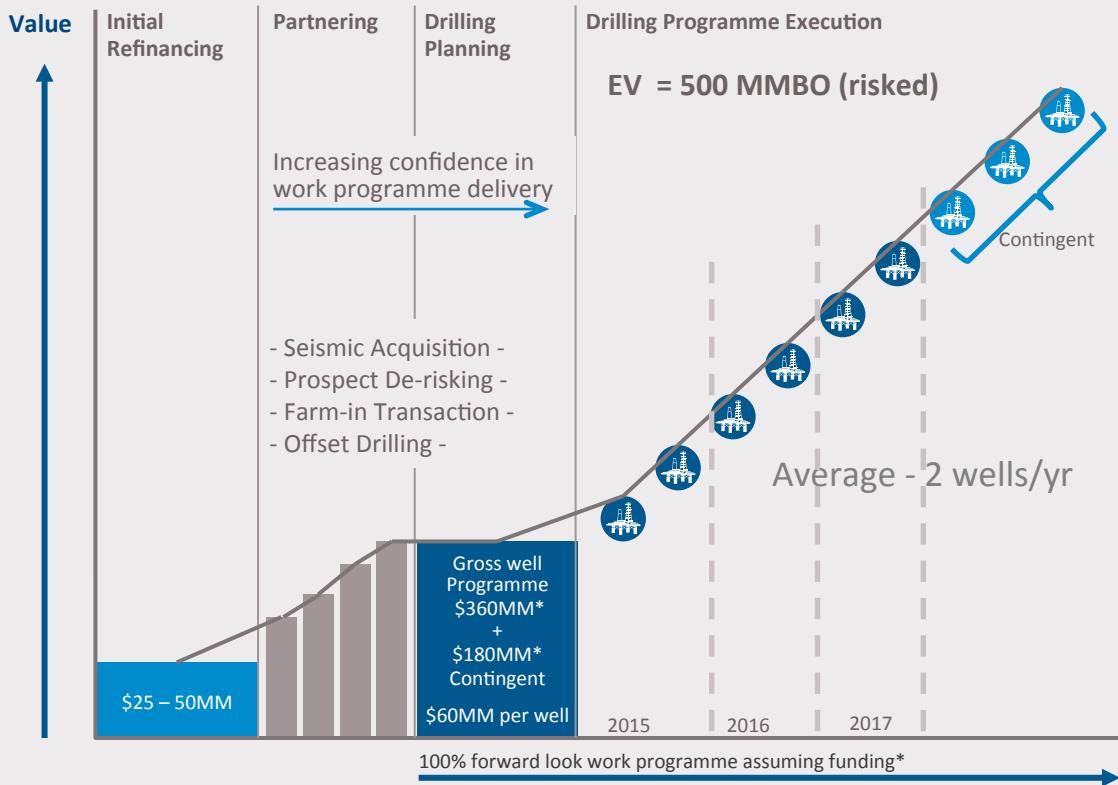
Sangomar Block (Cairn/Conoco/FAR)



SOSP Block (African Petroleum)

Poised to Recommence Drilling

Value Growth through Partnering and Drilling Programme Execution



Programme order subject to ongoing negotiations with third parties

Initial Refinancing

- > Private Placement (\$20m Feb 2014)
- > Public Listing on new exchange and new fundraising
- > Continued data room support
- > More time to secure farm-in partner
- > Further technical maturation of portfolio
- > Offset wells by third parties to de-risk prospects

Partnering







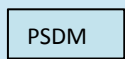




- > Reduce capital exposure through risk sharing
- > Recover back costs to forward work programme
- > Potential promote on well programme



Drilling Execution



- > Assuming fully funded drilling programme
- > Share technical expertise with partner
- > Potential value growth of Expected Value (EV) ~500MMBO in 3 years

Note: Risked Volumes based on 100% APCL from April 2014 CPR (numbers rounded)
*APCL estimate

Forward Business Plan and Work Programme*

	2014	2015	2016	2017
Liberia LB-08 [PSC]				
Liberia LB-09 [PSC]				
Cote d'Ivoire CI 513 [PSC]				
Cote d'Ivoire CI 509 [PSC]				
Senegal ** ROP [Royalty Tax]				
Senegal SOSP [Royalty Tax]				
Sierra Leone SL-03 [PSC]				
Sierra Leone SL-04 [PSC]	 <i>3D Survey Completed</i>			

 Proposed seismic acquisition
 Firm seismic acquisition

 Firm Commitment Well
 Contingent Next Period Well

 Potential Accelerated Well

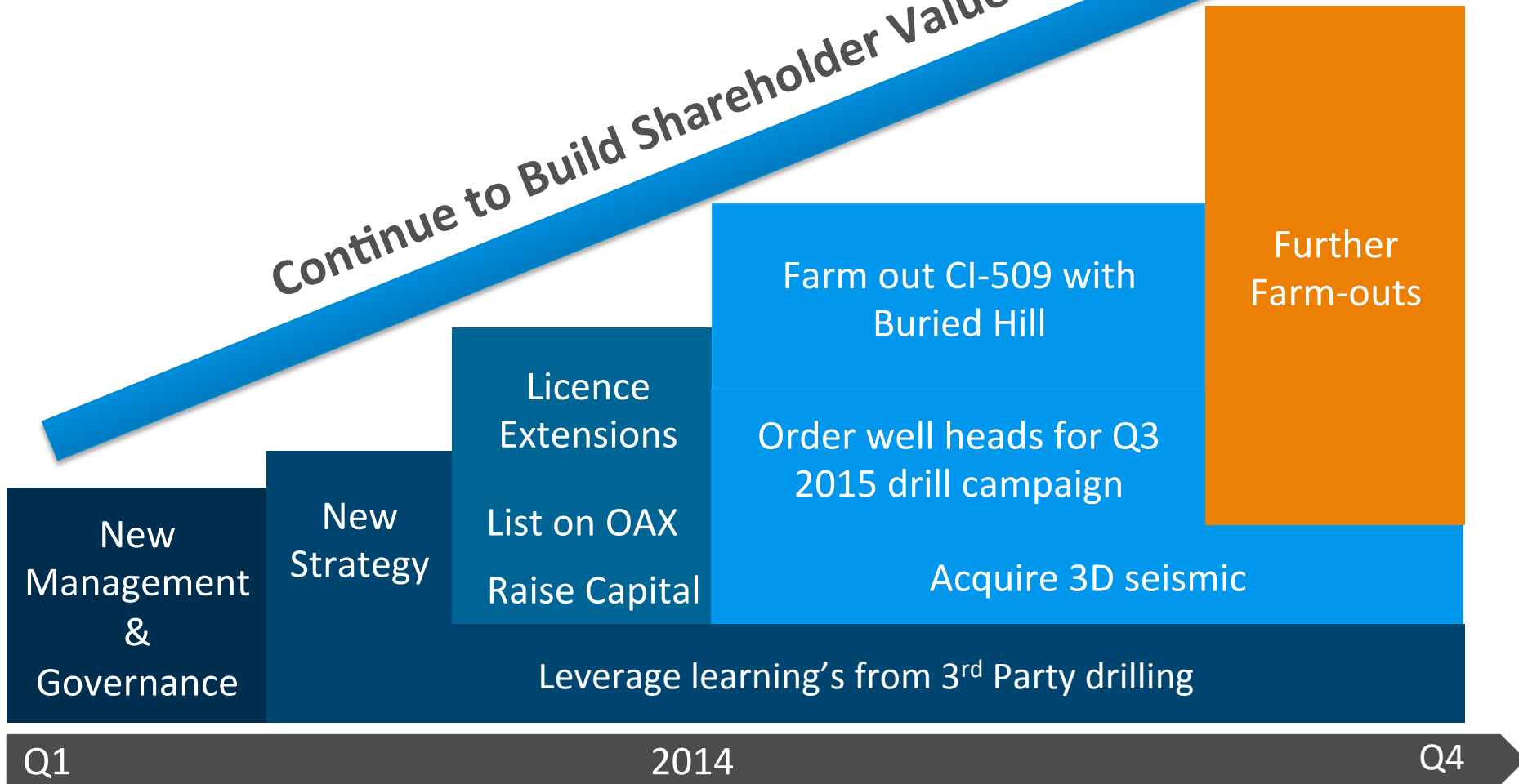
* Post Farm-in

** Ongoing extension discussions

Significant Milestones Achieved in 2014



Continue to Build Shareholder Value



Conclusion: Value Creation for the Near and Long Term



Valuable Assets

- 5.2bnbbls+ net unrisks prospective oil resources
- 12+ drillable prospects
- Seeking partners to share risk and reward

Aligned Capabilities

- Members of APCL technical team were part of Hess team and their 100% success rate in Ghana
- Excellent relationships with host Governments

Deepwater Discoveries

- Post 2007 Jubilee discovery success rate >70%
- Recent significant discoveries in Côte d'Ivoire (Total), Senegal (Cairn) and Ghana (Hess)

Commitments

- No material commitments until Q3 2015

Advisers & Contact Details



African Petroleum Corporation Ltd

Stratton House
5 Stratton Street
London, W1J 8LA

T: +44 (0) 203 435 7700

F: +44 (0) 203 435 7701

E: info@africanpetroleum.co.uk

www.africanpetroleum.com.au

Corporate Communications

Harriet de Beaufort-Suchlick

hsuchlick@africanpetroleum.co.uk

BROKERS

Dundee Securities Corporation

EAS Advisors LLC

Mirabaud Securities Limited

Pareto Securities

AUDITORS

Ernst & Young

COMPETENT PERSON

ERC Equipoise Limited

APPENDIX

Appendix: The Executive Team



Stuart Lake

CEO and Executive Director

- > Over 28 years of experience in Hess Corp., Apache Corp. & Shell
- > Demonstrated proven oil finder - drilling over 300 wells in 11 countries maintaining 85% geological success (270 + discoveries)
- > Led Hess exploration campaign in Ghana that had 7 consecutive discoveries and West African New Ventures
- > Directed more than 30 discoveries in Russia at Hess as VP Exploration



Jens Pace

COO

- > 30 years at BP and its heritage company Amoco (UK) gaining substantial exploration and production experience in Africa
- > Managed a very large and active exploration portfolio for BP in North Africa
- > Extensive experience in field development, Commercial Manager, dealing with national oil companies and African governments



Stephen West

Finance Director

- > Over 20 years of financial and corporate experience from public practice, oil & gas, mining and investment banking
- > Qualified Chartered Accountant with Bachelor of Commerce (Accounting and Business Law)
- > Non-Executive director of ASX listed Apollo Consolidated Ltd and Zeta Petroleum

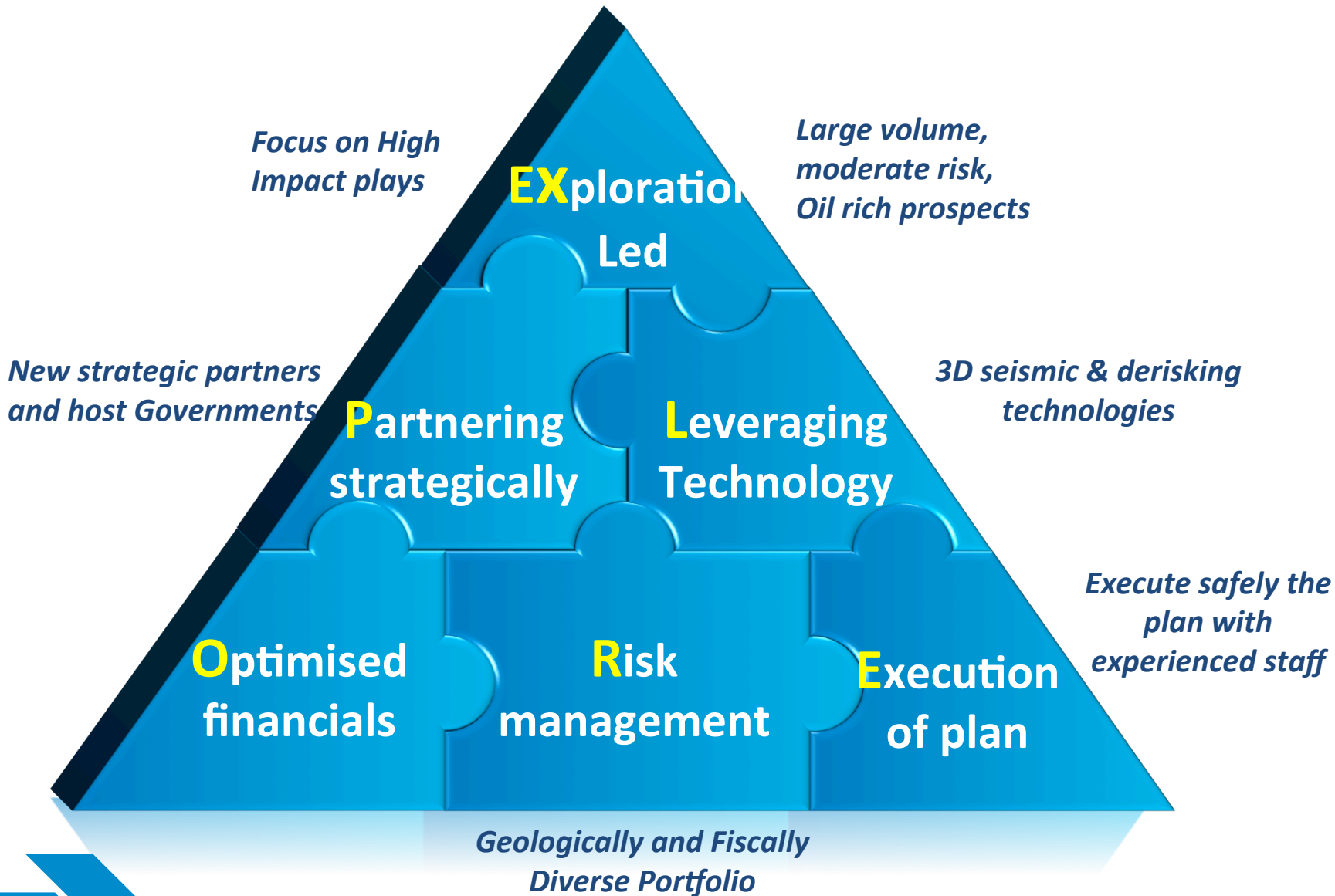


Michael Barrett

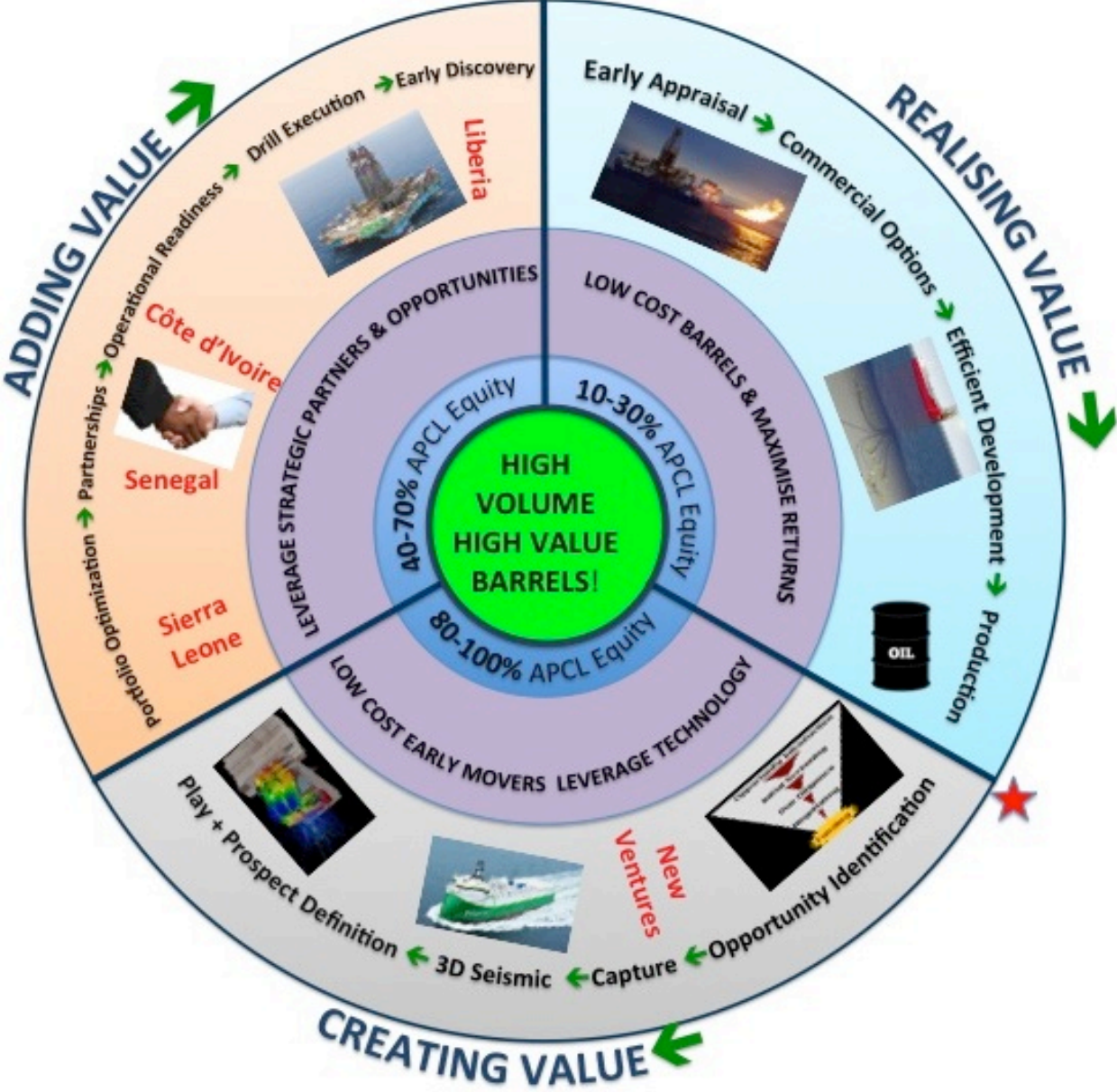
Exploration Director

- > Over 20 years global exploration experience at Chevron, Addax International
- > Specialised in play and prospect risk assessment, volumetric analysis, commercial evaluation and portfolio management
- > Background in quantitative geophysics, stratigraphic interpretation workflows and 3D visualisation

Appendix: Strategic Steps to Success



Appendix: African Petroleum Corporation's Value Cycle



Appendix: Financial Strategy

“Broaden the sources of funding for the Company whilst ensuring an appropriate capital structure, in order to support the Group’s growth strategy.”

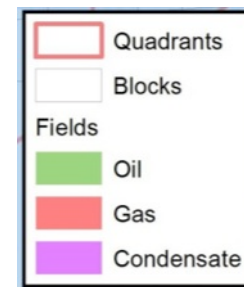
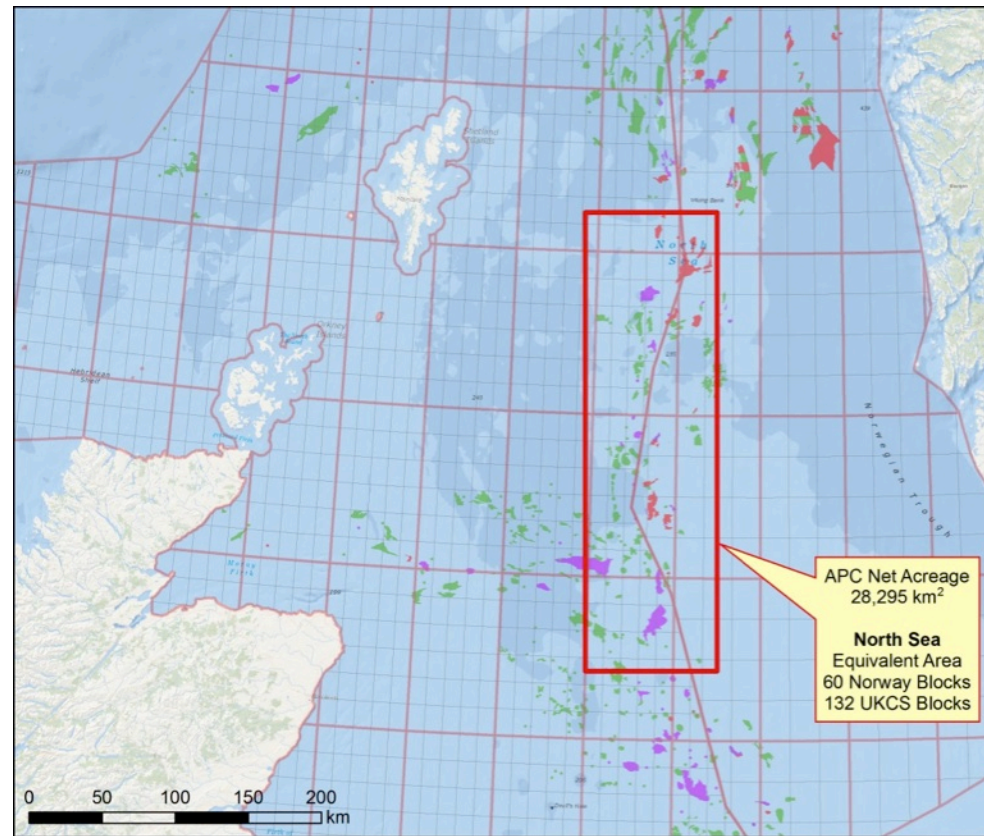
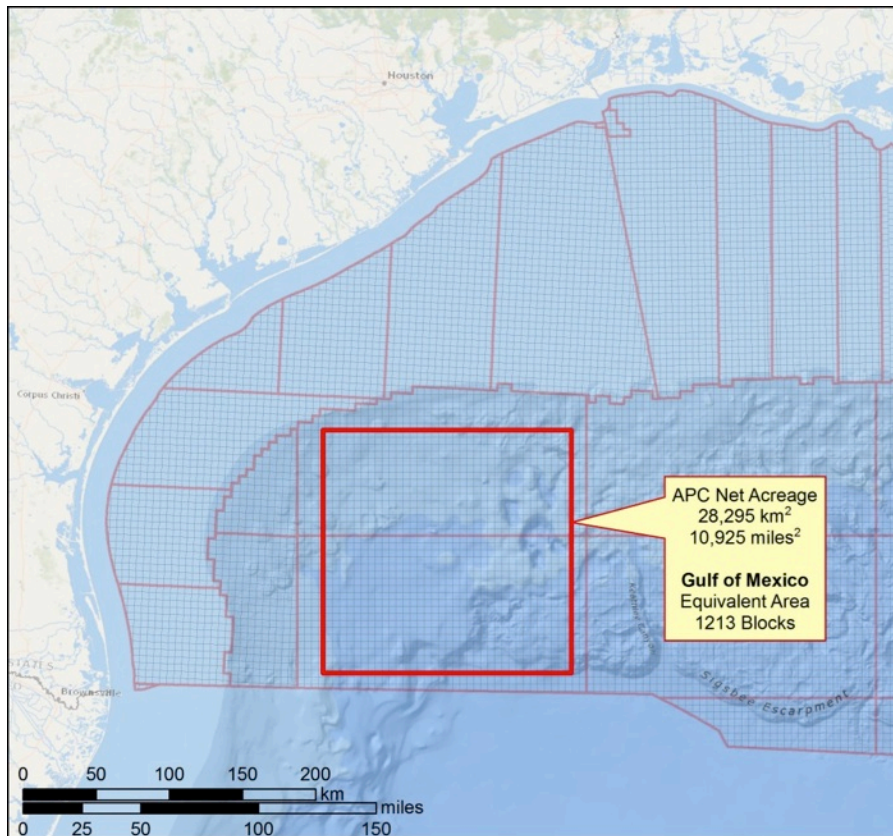
- > Currently focused on funding high-impact exploration work by farming out licence interests to industry partners
- > Maintaining capital discipline to ensure that our cost base remains appropriate to our organisational capacity

SNAPSHOT

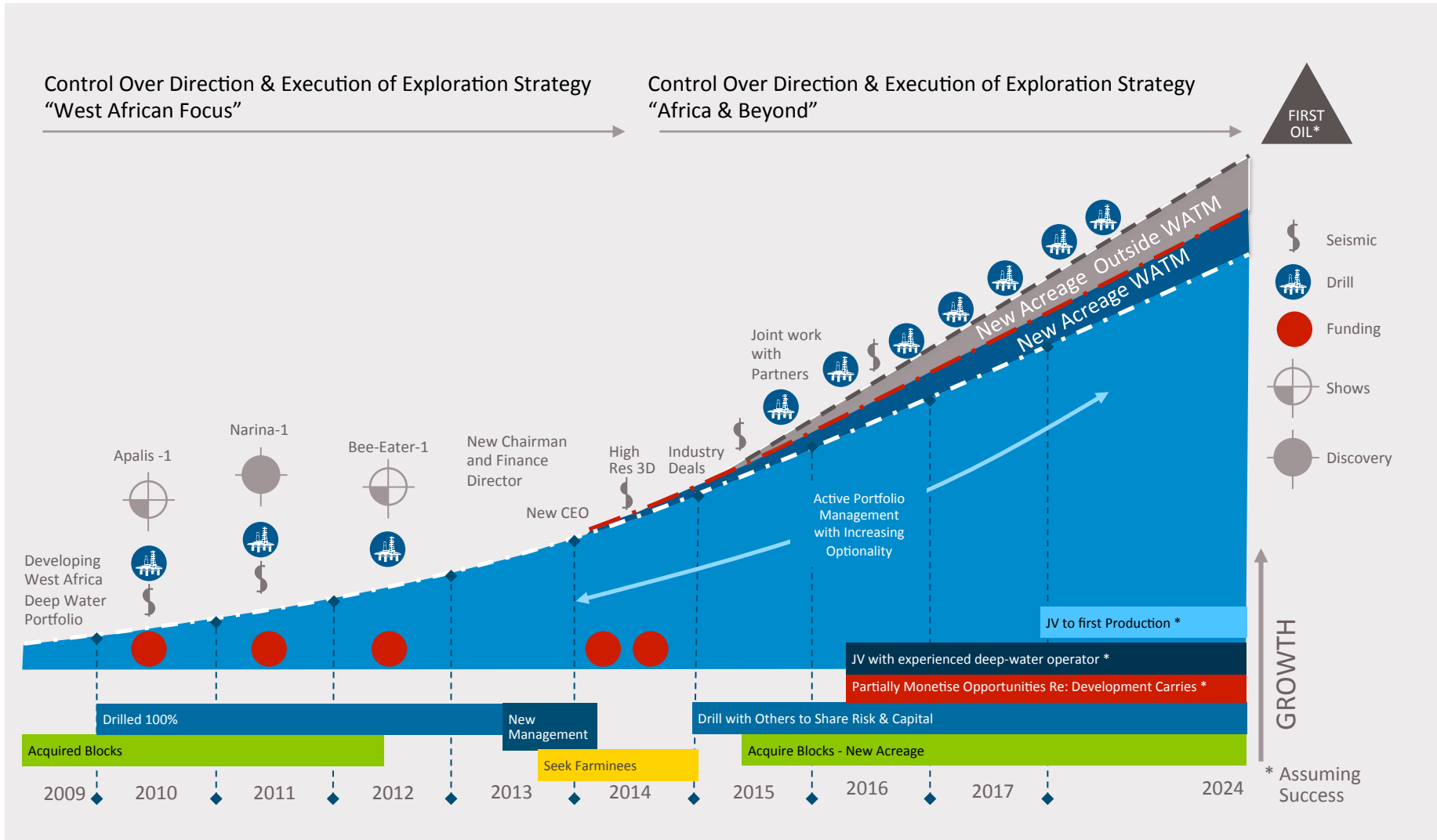
- > **Cash (30 June 2014)**
Unrestricted = US\$16.6m
Restricted = US\$12.1m
- > **No Debt**
- > **Shareholders**
Supportive blue-chip shareholder base
- > **Farm-out Process**
Significant progress made with farm-out process



Appendix: African Petroleum Corporation Net Acreage Comparison Gulf of Mexico and North Sea



Appendix: Operational Timeline: History and Outlook



Appendix: Country Profile



Côte d'Ivoire

GDP Projected Growth ('14): 9.8%

Population ('12): 20.6m

Population Growth Rate: 2.2%

Main Exports: Cocoa, coffee, petroleum, palm oil

APC Net Acreage: 2,284km²

Existing Operators (not limited to): Total, Tullow, LUKOIL, Anadarko, Vitol

Contract Type: Production Sharing Contract

Senegal

GDP Projected Growth ('14): 5.1%

Population ('12): 13.2m

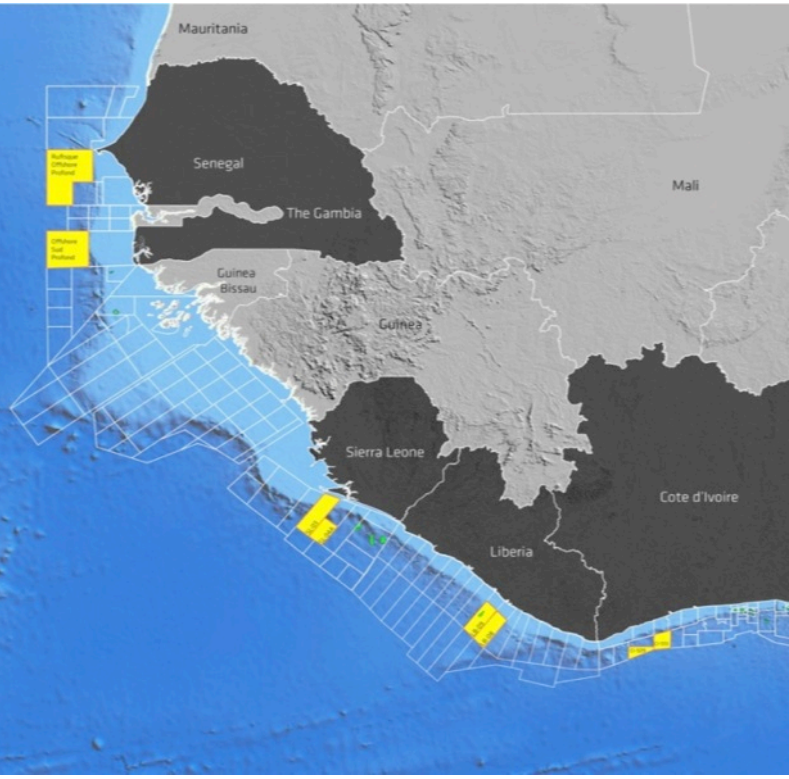
Population Growth Rate: 2.6%

Main Exports: fish, petroleum products, phosphates, cotton

APC Net Acreage: 14,804km²

Existing Operators (not limited to): Atlas Petroleum, Cairn Energy, FAR, Timis Corporation

Contract Type: Production Sharing Contract



Source: UN Economic Commission for Africa

Liberia

GDP Projected Growth ('14): 5.4%

Population ('12): 4.2m

Population Growth Rate: 2.6%

Main Exports: Diamonds, iron ore, rubber, timber, coffee, cocoa

APC Net Acreage: 5,352km²

Existing Operators (not limited to): Anadarko, Chevron, Repsol, Eni, Exxon

Contract Type: Production Sharing Contract

Sierra Leone

GDP Projected Growth ('14): 12.1%

Population ('12): 6.1m

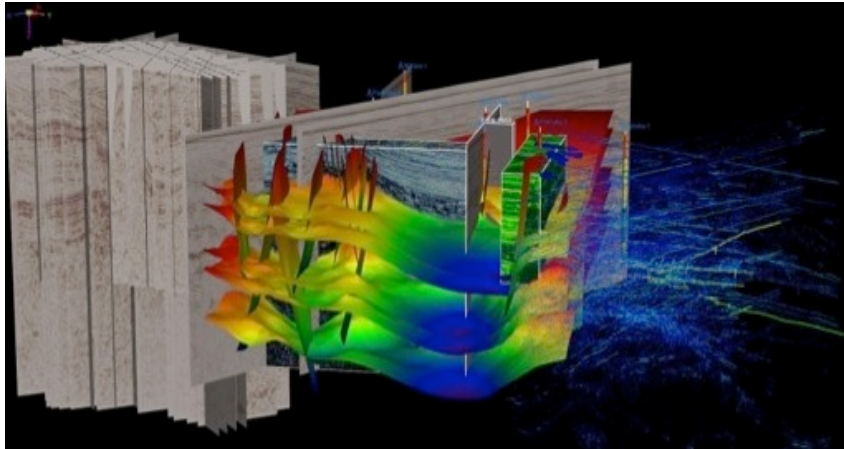
Population Growth Rate: 2.1%

Main Exports: Diamonds, rutile, cocoa, coffee

APC Net Acreage: 5,855km²

Existing Operators (not limited to): LUKOIL, Chevron, Anadarko

Contract Type: Royalty/Tax

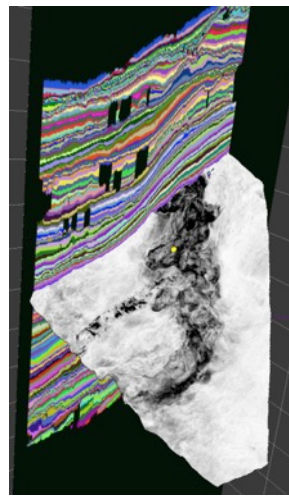
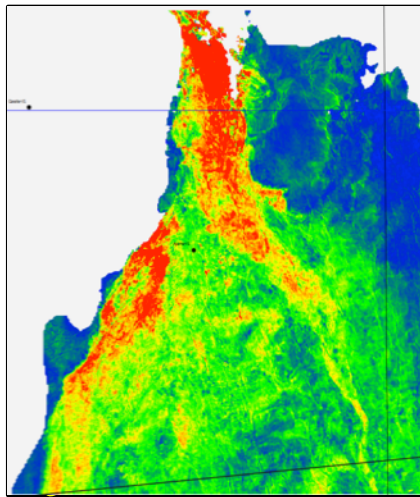


Seismic Acquisition and Processing

- > High quality 3D seismic data acquisition from leading contractors (high resolution 3D planned)
- > PSDM volumes executed for Liberia and Côte d'Ivoire and planned for Senegal
- > Reprocessing underway to further optimise 3D seismic data

Geological and Geophysical Interpretation

- > State-of-the-art stratigraphic analyses & workflows utilising Paradigm tools and Paleoscan
- > Rock physics, forward modelling and attributes using IKON and RSI integrating latest well results
- > Section balancing and 3D hydrocarbon migration modelling
- > Full Tensor Gradiometry to be the game changer for IOP assets in Niger



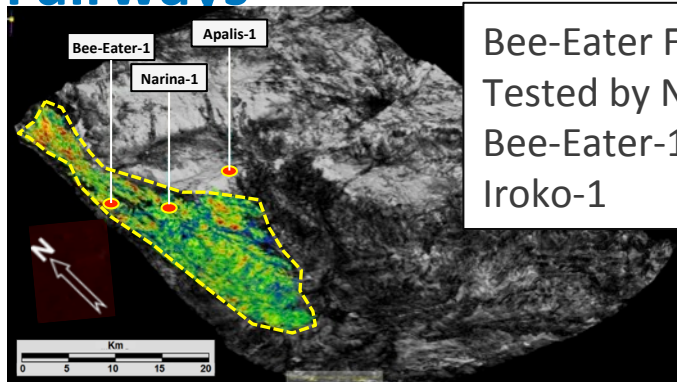
Technologies Utilised During Drilling Operations

- > In extreme water depths and remote locations, data is reliably obtained and transmitted to the drilling and G&G teams to facilitate rapid decision making
- > 5th & 6th generation semisubmersible rigs and drill ships
- > Precise well design and rigorous execution

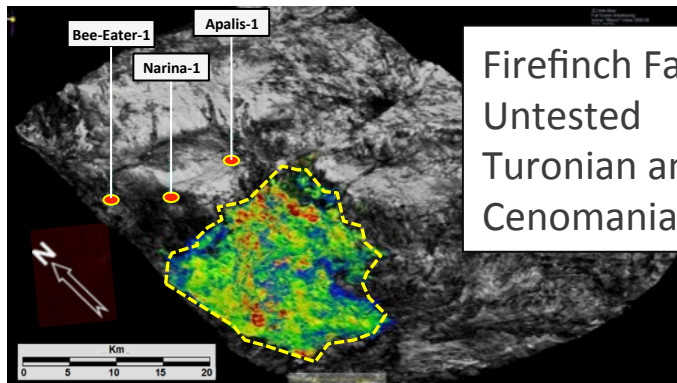
Advanced Wireline Technologies

- > Schlumbergers Quicksilver advanced sampling probe allows focused fluid extraction with minimal fluid contamination

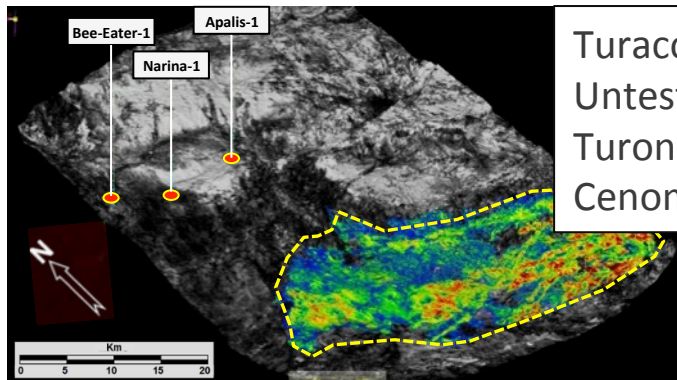
Appendix: Block LB-08 & LB-09 Main Prospective Play Fairways



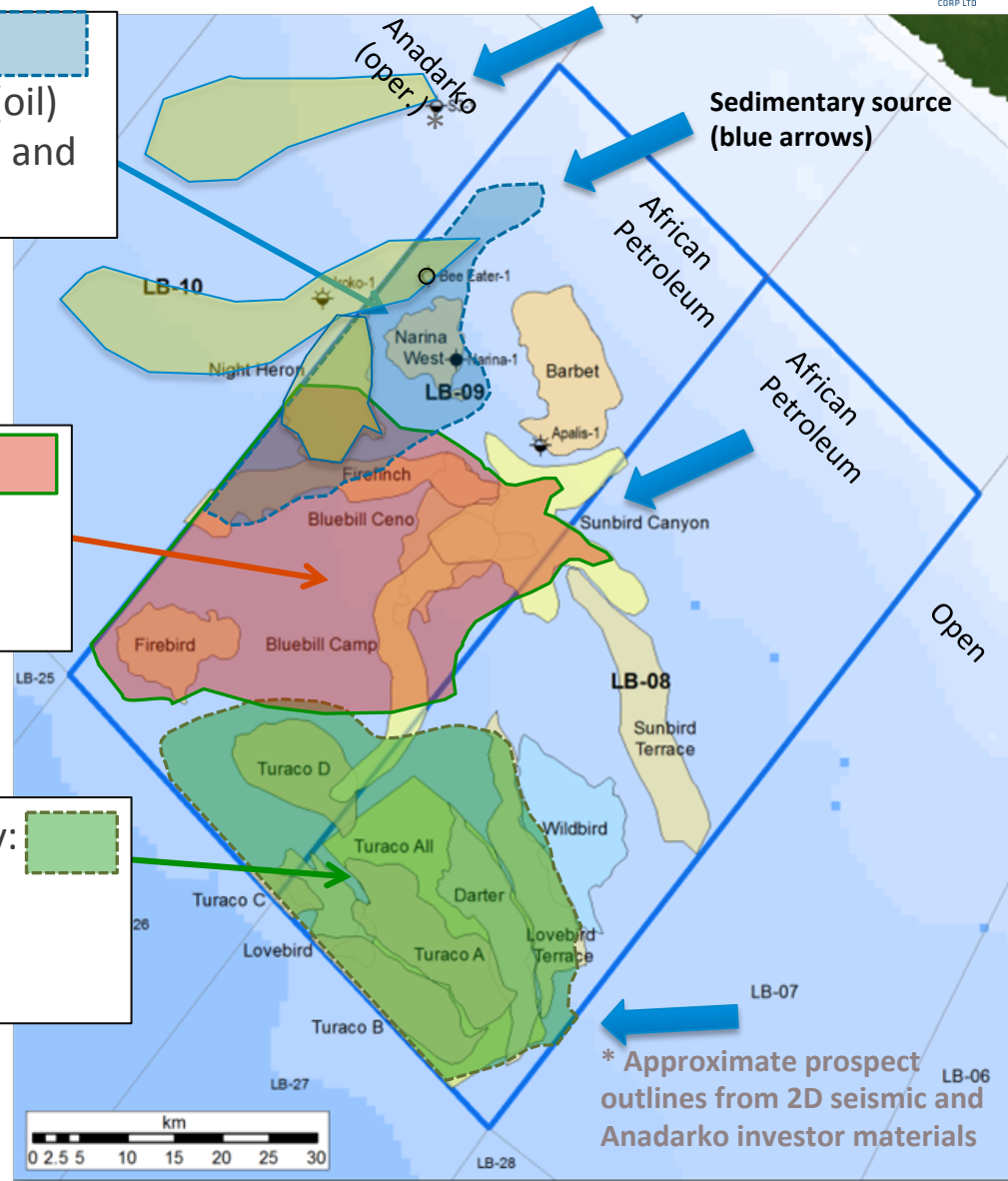
Bee-Eater Fairway: [Blue dashed box]
 Tested by Narina-1 (oil)
 Bee-Eater-1 (shows) and Iroko-1



Firefinch Fairway: [Red box]
 Untested
 Turonian and Cenomanian

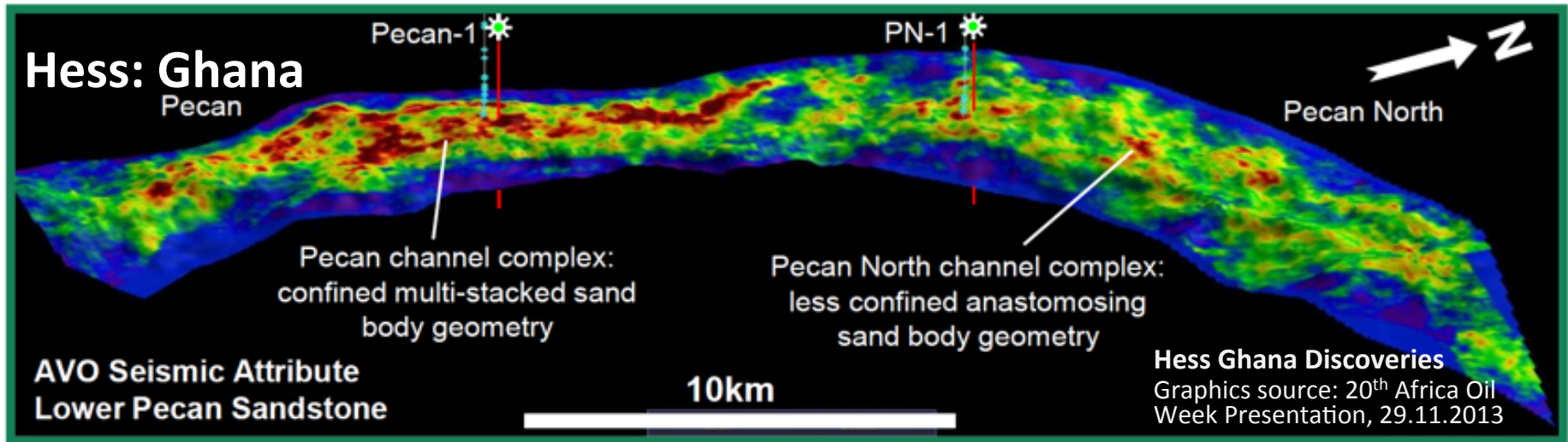


Turaco Fairway: [Green dashed box]
 Untested
 Turonian and Cenomanian

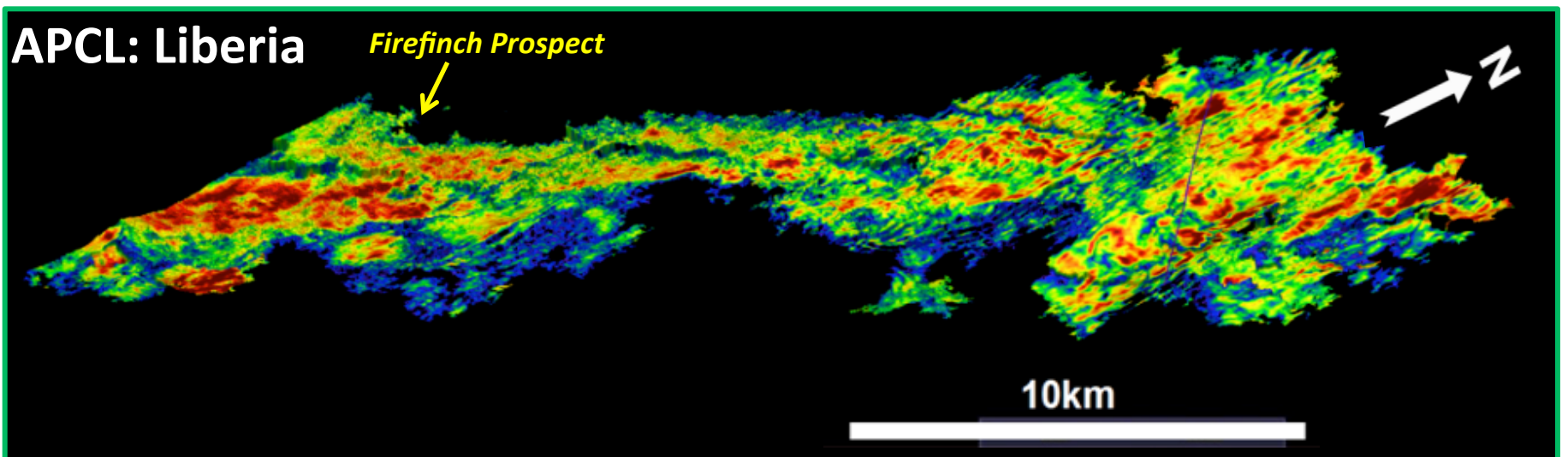


* Approximate prospect outlines from 2D seismic and Anadarko investor materials

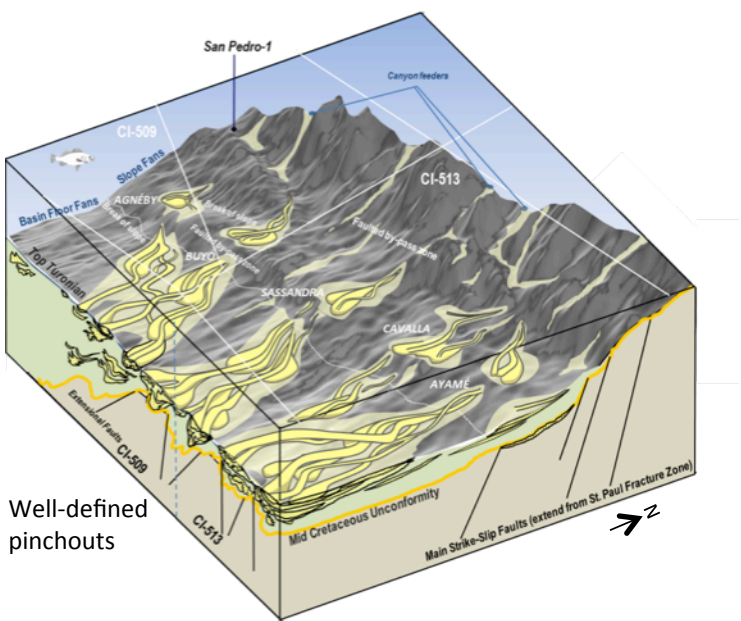
Appendix: Recent “commercial” discoveries in Ghana look analogous to Liberia Blocks LB-08 and LB-09



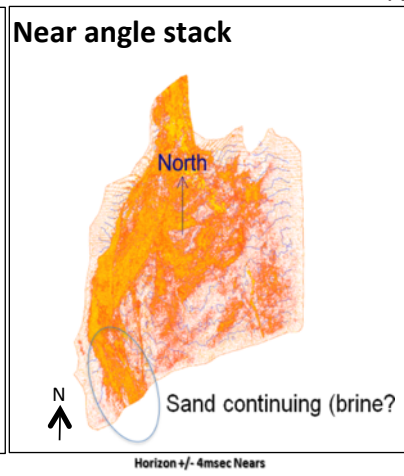
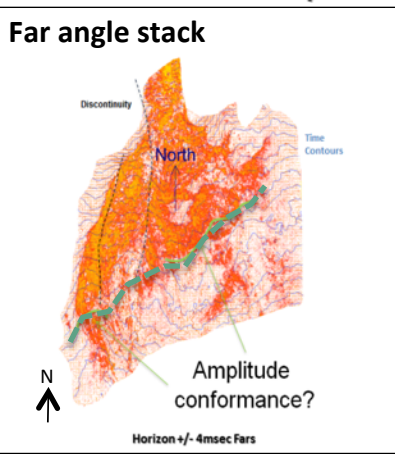
Pecan – 1 encountered 75m (245ft) of oil pay at 2 intervals, PN-1 encountered 12m of pay



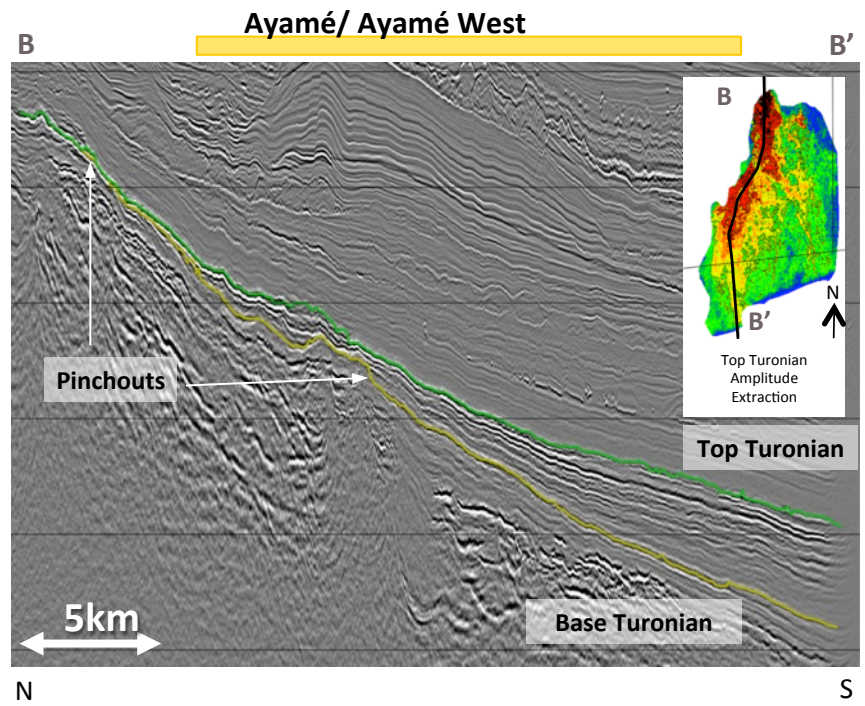
Appendix: Côte d'Ivoire – CI-513 Ayamé Prospect



Prospect	Ayamé/ Ayamé West
Block	CI-513
License Area	1,446km²
Water Depth	900-3150m
Play Fairway	Turonian
Mean Prospective Unrisked Resources	922* MMstb



TWT



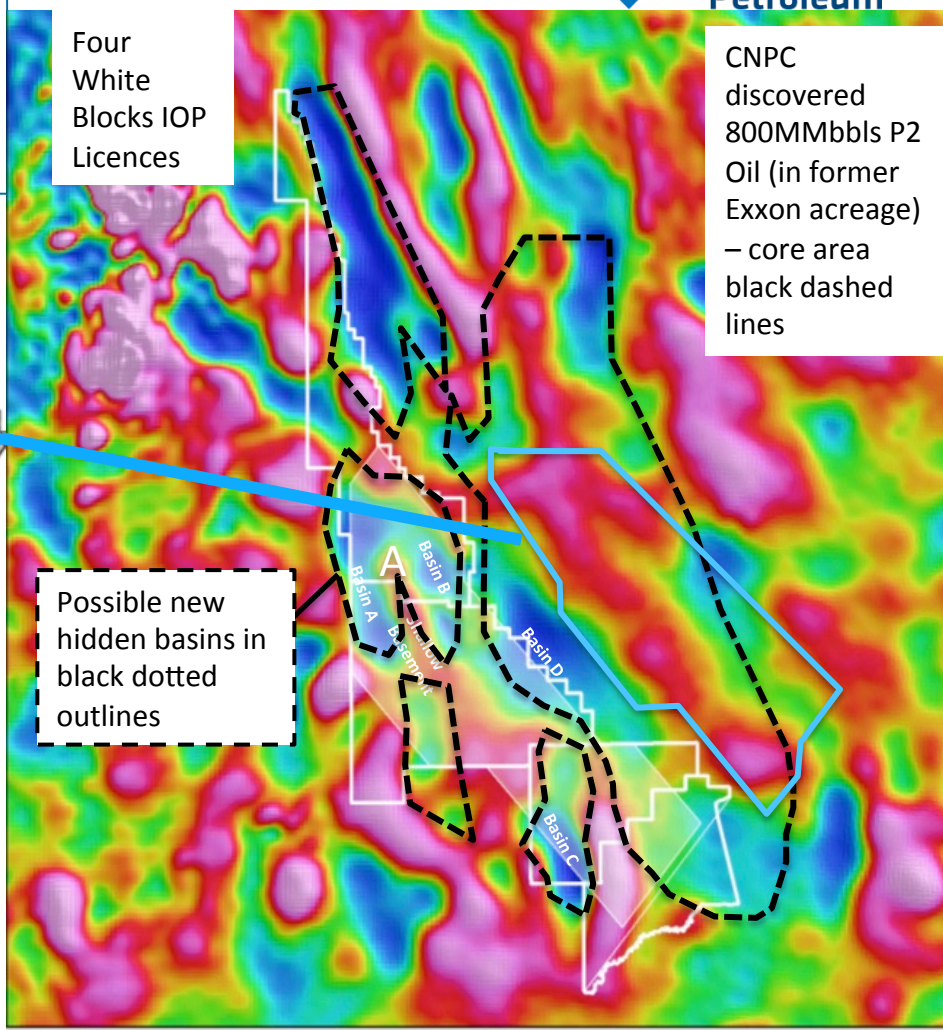
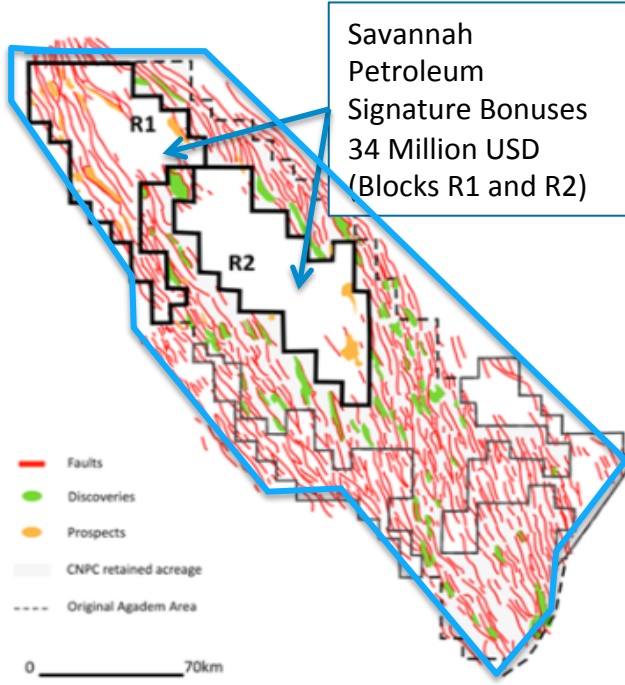
*ERC Equipoise CPR 2014

Appendix: 14% shareholder in International Petroleum Niger Licences

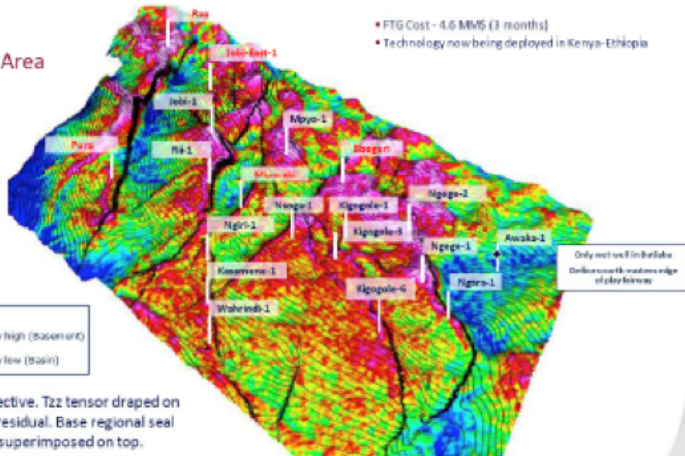


FTG Technology used by Tullow in Uganda and Africa Oil in Kenya to great success in detailed mapping

FTG with seismic unlocks the basin potential



Uganda Butiaba Area



NE perspective. Tzz tensor draped on top of Tz residual. Base regional seal contours superimposed on top.

- FTG Cost - 4.6 MMS (3 months)
- Technology now being deployed in Kenya-Ethiopia

Regional Gravity Map sourced from ARKEx (Blues: Basins, Reds Highs)

Appendix: Corporate Social Responsibility, examples in action



Sightsavers

- > APCL sponsored trainees will deliver preventative eye care to a population of over 1.6 million
- > Providing funding and equipment to rural eye-care clinics



Gbowee Peace Foundation

- > Worked with Nobel laureate to design after school program and support Ebola awareness
- > Teaching leadership skills and reproductive health to school girls



University of Liberia Computer Lab

- > Increased capacity for G&G related educational training
- > Provided software licenses and equipment for geosciences program



Student Sponsorship

- > G&G scholarship, opportunity to study at top universities in the UK

Commitment to build capacity, transfer knowledge and encourage local commercial participation across areas of operation